

Inside this issue:

- EEL Award nominations invited 2
- Nest boxes at Kenibea Bushland Reserve 3
- Ticks and their removal 4
- Fridays in the Field 5
- Groups seeking members 8
- Native of the moment 14
- Landcare sightings 15

Landcare at the Living Smart Festival

Lake Macquarie Landcare were part of the Nature Zone at the Living Smart Festival for the first time this year.

The Nature Zone tent was comprised of a presentation space where talks were featured on low-tox cleaning, native bees and pollinators, creating backyard habitat, and a special visit from some small native animals. The other half was filled with a garden escapes display, some weedy bushland with habbie stacks, and healthy bushland focusing on groundcovers, midstorey, and canopy representing some of the Lake's best wildlife habitat.

Our habitat displays not only weathered the heat but also managed to captivate the attention of many attendees. Wendy's biodiversity talk sparked the curiosity and enthusiasm of the next generation of Landcarers with the help of a Water Dragon, a Blue-tongue Lizard, a mother Ringtail Possum and her two joeys, and a Grey-headed Flying Fox.

Thank you to all the incredible individuals who dedicated their time and effort into making this event a memorable success!



Above (top left) The display of the habitat features so important on Landcare sites, (top right) Landcare volunteers were on-hand to share information about Landcare in Lake Macquarie, (bottom) the crowds rolled in for Wendy's biodiversity talk.

Join us to celebrate!

You are invited to the annual Lake Macquarie Landcare Christmas party and Environmental Excellence in Landcare Awards!

Friday 1 December, 4-6pm
Landcare and Sustainable Living Centre,
umali barai-ku
80 Toronto Rd, Booragul

Come along to celebrate the wonderful year of Landcare achievements with friends, food and plenty of laughter.

Bookings are essential so please RSVP by 20 November to lro@lakemac.nsw.gov.au or 4921 0392.



Nominations for EEL Awards

Nominations are invited for the 2023 Lake Macquarie Environmental Excellence in Landcare (EEL) Awards. Categories for individual nominations include the John Hughson 'Soaring with the Eagles' award, Local Legend, Carl Fulton Memorial Community Education Award, Landcare Achievers Award, and a new Silent Strength Award. There are also Newcomer and Long Standing Group Award categories.

Nomination forms and criteria are available from the Landcare office or online.

Nominations close Friday 3 November 2023 with awards to be presented at the end of year celebration on 1 December 2023. If you would like assistance with a nomination please contact the Landcare office on 4921 0392



2024 Lake Mac Awards

Help celebrate the incredible people in our community and acknowledge local legends who have made an outstanding contribution to our city.

The 2024 Lake Mac Awards recognise excellence in leadership, advocacy, innovation, bravery, skill or community spirit across the following categories:

- Sports
- Arts and creativity
- Volunteering and community contribution
- Environmental enhancements
- Events
- Diversity and inclusion

Nominate a person, group or yourself online by 17 November at www.lakemac.com.au/Our-Council/About-us/Awards/Lake-Mac-Awards

Winners will be announced at a gala event in March 2024.



Kenibea Bushland Reserve habitat enhanced



Photos provided by Bob Spargo

This September saw the installation of 12 nest boxes to enhance the habitat at Kenibea Bushland Reserve. The initiative was part of a project by Kenibea Bushland Reserve Landcare group, supported by Lake Macquarie City Council through its Community Environment Grants Program.

The project will add to the habitat improvement that the Landcare group contribute through their weeding and regeneration efforts by adding nesting and roosting boxes to trees in areas where natural hollows were low or absent.

The nest boxes were installed by a qualified ecologist with working-at-heights training and using the Habisure system to avoid damage to trees. The four box styles cater for different fauna groups, including larger possums and birds, smaller birds such as parrots and rosellas, gliders, and microbats. Landcare Team Co-leader Bob Spargo and fellow volunteers Richard McFayden and Robyn Pollard helped with the nest box placement from the ground.

The Landcare group will be inviting local residents and schools to learn more about the project and the efforts of the Landcare group. If you would like to find out more or get involved please contact the Landcare office to be put in touch with the group.

ABC Radio interview on Kenibea Nest Boxes

This project garnered the interest of ABC Radio, with our Landcare Coordinator, Jason Harvey, being interviewed by Paul Turton on 28 September. The interview included an overview of the project at Kenibea, why nest boxes are going in at that site, the different kinds of boxes, when nest boxes are appropriate and the benefits the nest boxes have for wildlife. If you missed it, you can listen to the recording at www.abc.net.au/listen/programs/newcastle-mornings/mornings/102892660, with the interview starting at 54:50 minutes in.

Ticks and their removal



About ticks

The paralysis tick is the most common tick in Lake Macquarie. It is often referred to as a grass tick, seed tick or bush tick depending on its stage of development. Ticks are most active during periods of high humidity, especially after rain.

Paralysis ticks are not particularly mobile and rely on passing people or animals for a blood meal. They will crawl up the stems of grasses or along branches and 'perch', ready to latch on to passing animals or people.

Reducing the likelihood of tick bites

Be prepared when working in known tick-infested areas. Be aware of your surroundings.

Wear a tucked in, long-sleeved shirt with collar up, long pants tucked into socks and a wide-brimmed hat.

Ticks often attach at the feet first and move upwards, attaching in warm moist areas on the body. Your first line of defence is your shoes and socks.

If you are working in a known tick-infested area consider wearing Permethrin treated clothing. Permethrin will kill or weaken ticks upon contact.

Spray hats and clothing with a DEET product every three hours. A DEET-based insect repellent can also be applied to any exposed skin such as wrists, hands and neck. Landcare groups can request insect repellent.

When you get home

Always leave your shoes outside, and check them for ticks, remembering that ticks can be as small as a poppy seed and a challenge to see.

Ticks often attach to clothing, so take your clothes off and put them in a dryer at high heat for at least 15-20 minutes. The high temperature will kill the ticks and prepare the clothes for washing.

Check yourself thoroughly. Check all areas of the body - ticks particularly like:

- Hairlines
- Inside and behind the ears
- Back of the neck
- Inside the belly button
- The groin
- Behind the knees
- Between your toes
- Armpits
- Around the waistline
- Under and around waistbands

Tick removal

The Tick Off product by Medi Freeze is the recommended method for tick removal and can be requested by Landcare groups. It must be stored below 25 degrees and a storage case to assist in this requirement can also be requested. Detailed instructions for use and storage will be provided.

A common reaction after a tick bite is an itchy red lump that may persist for a week or more. A 'bulls-eye' rash over the bite or swelling over a large area may indicate an abnormal reaction, which should be seen to by a medical professional.

Talk to us

If you or your Landcare group feel you have exposure risk, see high numbers of ticks, are getting tick bites or seeing ticks on skin or clothing before they attach, or are otherwise concerned please contact us to discuss your situation and what assistance we may be able to provide.

Fridays in the field

Follow us on Facebook to see our regular segment 'Fridays in the Field' with Landcare staff. Here are some snippets from recent weeks.



18 August with Amy (photos above)

The Green Team spent some time at Farm Street Landcare finding the edges of a patch of the fragrant and impossible to forget Jasmine Vine (*Jasminum spp.*). You may have noticed it coming into flower. You, or someone you know, may have it on a site and know the struggles of getting rid of this beastly vine in the bushland. It takes a lot of time and patience to work on this weed. On the flip side we have the lovely native, not so fragrant and impossible to forget Wonga Wonga Vine (*Pandorea pandorana*). I have spotted this coming into flower in the Redhead area.



1 September with Wendy (photos above)

What glorious undergrowth flourishes at this new Landcare site: it was like snorkelling through coral reef, with a rare complexity of structure, colour and texture slowly being revealed. This beautiful *Hardenbergia violacea* stands out, and Team Leader Peter waves from a patch of Bitou. Welcome Warwick Way Gullies Landcare, it is great to know this very valuable patch is under the stewardship of such a knowledgeable custodian – hoping for many more happy hours here.

20 October with Effie

I decided to break away from the office and joined Alex, Wendy and our dedicated nursery volunteers on a seed-collecting expedition in Wangi. I couldn't think of a better way to start a work week in the office than with some time out in the field! We made our way through the bush collecting *Acacia longifolia*, *Acacia suaveolens*, *Acacia terminalis*, a small amount of *Pultenaea paleacea*, and found a group of shield bugs spiralling around in increasing size and varying colour. It really was a joy to be surrounded by all the native plants, thriving and busy seeding.



Eleebana Residences Landcare wildflowers

By Nancy Lott, Eleebana Residences Landcare Team Leader

At a recent Ladies morning tea, held in our Village hall, I gave a short talk about some of the lovely wildflowers which are currently in bloom on our Landcare site, in our over 55's village.

I spoke about the early days of Landcare and the help that we received from Jason & staff at the Landcare office to get us started. As our site is on private land it was suggested that we apply for a grant from Lake Macquarie City Council, which we were lucky enough to receive. This helped us to purchase jute matting (to help hold the creek bank), enough tube stock to complete our planting plus mulch.

I spoke about the different varieties and the many advantages of native plants, (some of which the ladies were surprised to learn).

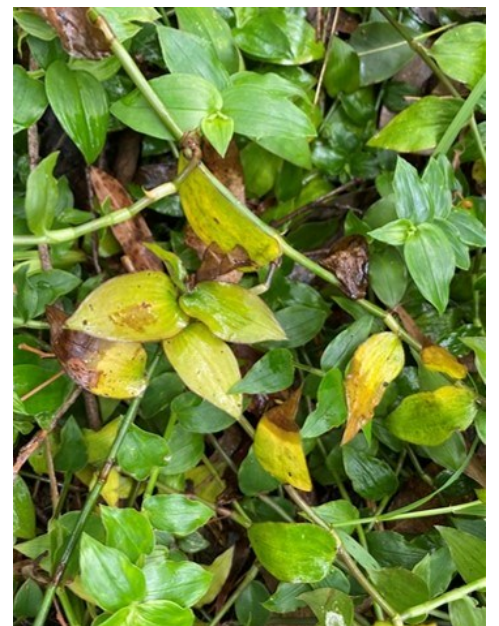
As most of these plants are only 3 to 5 years old, they have done remarkably well. We are very proud of our beautiful Landcare site in our village, currently we only have 3 members.



Trad Smut Release Trial

By Simon Lubinski, Landcare Program Delivery Officer

Last year just prior to Christmas, Lake Macquarie Landcare staff started a trial release of a CSIRO tested Trad treatment, Trad Smut Fungus. Trad has been shown to be a problematic weed across Lake Macquarie causing headaches for groups with raking, and solarising and raking and solarising..... How exciting to hear of an alternate treatment for this weed. When the office heard about the CSIRO trial of Trad Smut, we got in contact to discuss the possibility of being involved with the trial. Positive discussions with the CSIRO led us to select 8 Landcare sites to start trialling the release of Trad Smut. After nearly 12 months, the results have been mixed, but mostly positive. Considering the positive impact being made by the biocontrol, we are now recommending the release of infected Trad stems into Landcare sites where Trad is a problem. Ongoing data collection will be continuing from the 8 trial sites. Please contact the Landcare & Sustainable Living Centre to discuss Trad Smut release on your site.



Lakeside Retirement Village planting

By John Crocker, Lakeside Retirement Village Landcare Team Leader

Lakeside Retirement Village Landcare normally operates two work sessions a month on each of two different days in the salt marsh reserve on the northern boundary of the village. This time we combined for a planting blitz. Planting was needed in an area adjacent to Fullers Creek where a very old and very

dense patch of Asparagus Fern had been cleared and natural resilience was very low.

Our full complement of eight active members came together to plant 80 assorted plants in just over 2 hours. Two manual augers and many watering cans assisted the job. Thank you to all involved.



Thank you to Toronto Men's Shed

A lectern was constructed for the Landcare and Sustainable Living Centre's community room by the Toronto Men's Shed. The design was built from recycled timber including that sourced from discards of the old Landcare Resource Centre and materials from the Men's Shed.

We would like to thank Toronto Men's Shed for their skills and efforts in constructing this piece.



Landcare groups seeking members

The following groups would like to attract new volunteers. If you would like to advertise or update your group's details on this page and our website, please contact us on 4921 0392.

The groups have been organised under wards and suburbs to make them easier to locate, especially for those wishing to volunteer close to home (see map at right of wards in Lake Macquarie).



East Ward Groups

Suburb	Group Name	Meeting Time	Contact Details
Blacksmiths	Blacksmiths Beach Dunecare	Every 2nd Wed of the month, Meet at 9am at 8 Carawa Street, Blacksmiths	LML 4921 0392
Blacksmiths	Pelican Area Sustainable Neighbourhood Group	Varies, usually meet Tues 8:30am Grannies Pool Carpark	Greg 49714808
Catherine Hill Bay	Catherine Hill Bay Landcare	First Mon of the month, 3-5pm at Carpark at Graveyard Beach	Carmel Brown 0438 499 636
Dudley	Fern Creek Landcare	1st Saturday of the month 8:30 – 12 noon	Gabi 0478 670 146, www.facebook.com/ FernCreekLandcareDudley
Eleebana	Stobbart Creek Landcare	Every three weeks, 8:30-10am	LML 4921 0392
Floraville	Floraville Ridge & Rainforest Reserve	Variable	Winsome 4945 4336
Jewells	Ballantrae to Halewood	Varies	LML 4921 0392
Lakelands	Biddabah Creek Landcare	Every Monday 8:30am	Vina 0437 492 387
Pelican	Lakeview Parade Pelican	Monthly, usually on Wednesday mornings	Ted 0418328466, tedlougher@hotmail.com
Swansea	Lakeside Drive Landcare (cnr Wallarah St & Lakeside Dr)	Every 2nd Wed 8:30am-3pm and Fri 9am - 3pm	Garry 0400 033 006
Valentine	Allambee Gardens Reserve Landcare	Last Sun of month 2-4pm	LML 4921 0392
Valentine	Green Point Foreshore Reserve Landcare	Every Wed 8-11am	LML 4921 0392
Warners Bay/ Eleebana/ Lakelands	Warners Bay Landcare	Usually 1st Sun, 2nd Thurs and 3rd Fri of the month, 9am-12noon	LML 4921 0392

*** Have your group details changed? Please contact Lake Macquarie Landcare on 4921 0392 to update ***

West Ward Groups

Suburb	Group	Meeting Time	Contact Details
Bolton Point	Awaba Bay Landcare	1st Sun of each month, 9am-12noon, The Ridgeway between Bolton Cl & Fulton Cl	LML 4921 0392
Carey Bay/ Coal Point	Coal Point Progress Association Landcare	Every Thursday 8am-12:30pm	LML 4921 0392
Dora Creek	Dora Creek Landcare	Minnie Street or Boat Ramp - every	LML 4921 0392
Eraring	Payten Street Landcare	Variable	LML 4921 0392
Fennell Bay/ Bolton Point	Kooroora Bay Landcare	8.30-11.30am, first and third Wednesday of every month (please call to confirm)	Tony 040 889 1411
Macquarie Hills	Torrens Avenue Landcare	Varies	LML 4921 0392
Mirrabooka	Dandaraga Road - Fishery Point Landcare	1st Thursday or 3rd Saturday of each month.	Email Wilma on wilvk123@gmail.com or call LML 4921 0392
Morisset	Lakeside Retirement Village Landcare	Varies - several times a month	LML 4921 0392
Morisset	Yunung Landcare	1st Wednesday of the month and as needed	LML 4921 0392
Morisset Park	Lakeview Road Morisset Park	Varies	LML 4921 0392
Sunshine	Sunshine-Silverwater Landcare	1st Saturday & 3rd Thursday mornings of each month	LML 4921 0392 or email Marion melugg2@gmail.com
Toronto	Toronto Lions Park	2nd Friday of the month, 8-10am	LML 4921 0392
Toronto	Toronto Greenway Landcare	Every Sat from 8am.	LML 4921 0392
Wangi Wangi	Wangi Landcare (Oval site Cnr Donnelly Rd & Dobell Dr)	Last Tues of the month, 8-10am	Janet White 4975 5715
Wangi Wangi	Dobell Drive Reserve Landcare	2nd Sun of the month 8am –10am	LML 4921 0392
Wangi Wangi	Myuna Bay Landcare	2nd Fri of the month, 9am – 12noon.	LML 4921 0392 or email rmontgomery962@gmail.com
Wangi Wangi	Wangi Ridge Preservation Board Landcare	Sun, 8-10am, meet at water tank at Cres Rd	LML 4921 0392
Wyee Point	Wyee Point Reserve Landcare	Varies - see Wyee Point Reserve Landcare Facebook page	LML 4921 0392

North Ward Groups

Suburb	Group Name	Meeting Time	Contact Details
Cardiff	Afton Close Landcare	2nd & 4th Sat of month 9-12, end of Close	LML 4921 0392
Charlestown	Flaggy Creek Landcare	2nd Sat of the month, 8am, meet at corner of Kaleen & Wakal Sts	Robert Gibson 4943 7486
Holmesville	West Wallsend District Landcare	3rd Sun of the month from 8am or 9am, Western end of Elizabeth St. Holmesville	Paul Lindsay – Secretary, WWDSNG 4953 2252
Kahibah	Kenibea Landcare	Variable	LML 4921 0392
Kotara South	Tathra Landcare	Variable Sundays 8-10am. Meet at end of Neerim Ave	LML 4921 0392
Mount Hutton	Mount Hutton Landcare	Fridays, from 8:30am	LML 4921 0392
Rankin Park	Central Rankin Park Landcare	Wednesdays, Sundays	LML 4921 0392
Whitebridge	Fernleigh Track Whitebridge	1st Sat and 3rd Fri of month, 8 -11am. Fernleigh track rest area, entry from Paterson Close, Whitebridge.	LML 4921 0392

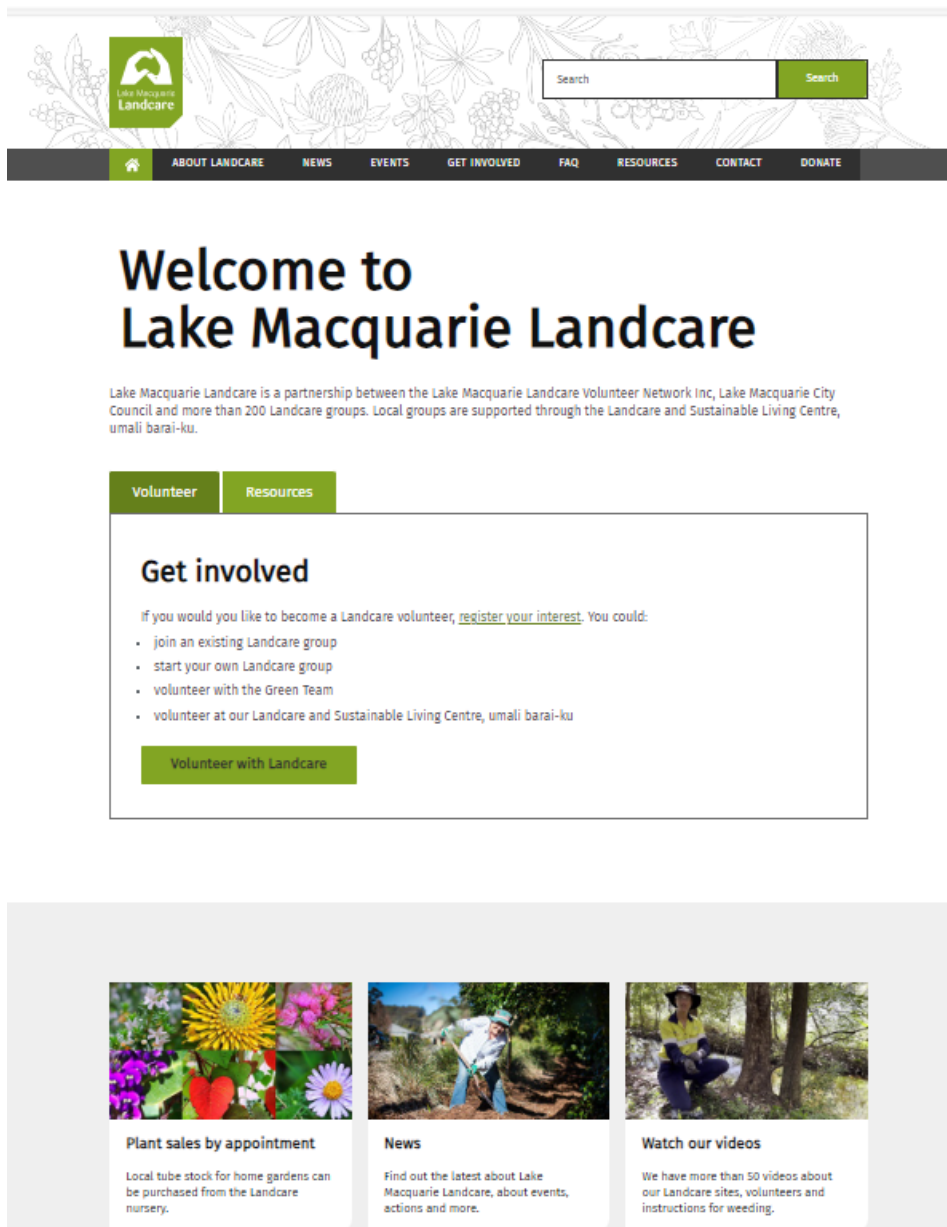
New look for Lake Macquarie Landcare website

The Lake Macquarie Landcare website had an upgrade at the end of September. Have you visited it recently?

The upgrade provided a fresh new look and some enhancements to its layout, functionality and ease-of-maintenance. The web address is the same - www.lakemacquarielandcare.org.au

You can view a range of resources on our website including a list of Landcare groups, ways to get involved with Landcare, our newsletters, factsheets and case studies, as well as governance documents for the Lake Macquarie Landcare Volunteer Network Inc.

If you have any feedback or ideas for the website please contact Kate at Lake Macquarie Landcare on 4921 0392



New Landcare sites of Lake Macquarie video

If you weren't able to come along on our Landcare Week Bus Tour, you can still enjoy a video with Team leader Karen, and group members David and Lorna showing us their site at Lakeview Road Morisset Park Landcare.

Visit our Youtube Channel www.youtube.com/LakeMacLandcare to watch the video and check out the full playlist of site videos.



Increased bush fire risk and hot conditions

As the season progresses, we encourage you to monitor the temperature, wind and humidity and do everything you can to keep you and your group members safe. Avoid Landcare activities in hot weather, especially in the hottest part of the day.

When working, remember to stay hydrated by drinking water regularly throughout the day, eat regular meals and snacks to help replace salt and electrolytes lost through sweating, take breaks in a shaded area, and do not wear more PPE than is needed for the job.



Hazards Near Me app

Download the Hazards Near Me app to stay up to date with alerts in your area. Hazards Near Me shows current information about local emergencies, including flood, bushfire and tsunamis, and advice on what to do to stay safe.

The app can send you push notifications when there are new incidents or when information changes. More information at <https://www.nsw.gov.au/emergency/hazards-near-me-app>



Green Team assistance

Each Landcare group can be supported with two Green Team visits per financial year. However, active groups who submit their work diaries can apply for further assistance. If there is room in the calendar once the first round of entitlements are filled, we will consider providing additional support.

Please contact Landcare Staff on Iro@lakemac.nsw.gov.au or 4921 0392 to book your friendly team visit.



AGM and nominations for LMLVN committee invited

Nominations are invited for representatives for the 2024 Lake Macquarie Landcare Volunteer Network Committee. Positions include Chair, Deputy Chair, Secretary, Treasurer and Ordinary Committee Member.

The Network meets for a few hours on the second Tuesday of each month. If you are interested in helping to shape the future of Landcare in Lake Macquarie and can spare a few hours each month, now is the time to join!

Nominations must be received by 2pm 27 November 2023.

Nomination forms are available on our website www.lakemacquarielandcare.org.au and can be obtained from the Landcare office.

Voting for these positions will take place at the AGM on Friday 1 December 2023 at the Landcare & Sustainable Living Centre, 80 Toronto Road Booragul at 2:30-3pm.

It is in the interest of all Landcarers to attend the AGM and have input into the management of Lake Macquarie Landcare Volunteer Network.

Landcare shirts and hats

The Lake Macquarie Landcare Volunteer Network now has fresh stock of Landcare shirts and hats available to purchase. Shirts are \$35, available in sizes: S, M, L, XL, and XXL. Hats are priced at \$22, in sizes 57cm, 59cm, and 61cm.

If you would like to purchase, you can drop into the Landcare Office, or contact us on 4921 0392 or email lro@lakemac.nsw.gov.au to coordinate a suitable pick-up time. Cash payments only for shirts and hat purchases.



Face to Face Team Leader training

As COVID restrictions become a thing of the past, Lake Macquarie Landcare is actively seeking expressions of interest for our face-to-face Team Leader training. While online training remains available and is suitable for some, the in-person option provides a unique opportunity to connect with fellow Landcarers and benefit from more hands-on interactions with our experienced trainers. If you're interested in registering, please send an email to lro@lakemac.nsw.gov.au

Waste to Art exhibition

The 2023 Sustainable Neighbourhoods Waste to Art exhibition showcases thought provoking artworks created by community members, artists, groups and students from across the region. A remarkable range of wearable artworks, sculptures, cute characters and beautiful functional items are on display, prompting us all to reflect on the waste in our lives, and what we can do to transition to a more sustainable future.

The exhibition runs from 14 October – 7 December 2023 across two locations at SEEN@Swansea and Toronto Launchpad.



Nature in Your Pocket

By Bob Denholm, Department of Planning and Environment

Nature can sometimes be a bit of a mystery, right?

Scientists from NSW Government have been innovating with ways to make getting information about plants and animals a whole lot easier.

Maybe you have spotted an interesting native animal and you want to know more about it. Perhaps you want to find out what trees and shrubs grow in your area, so they can be replanted.

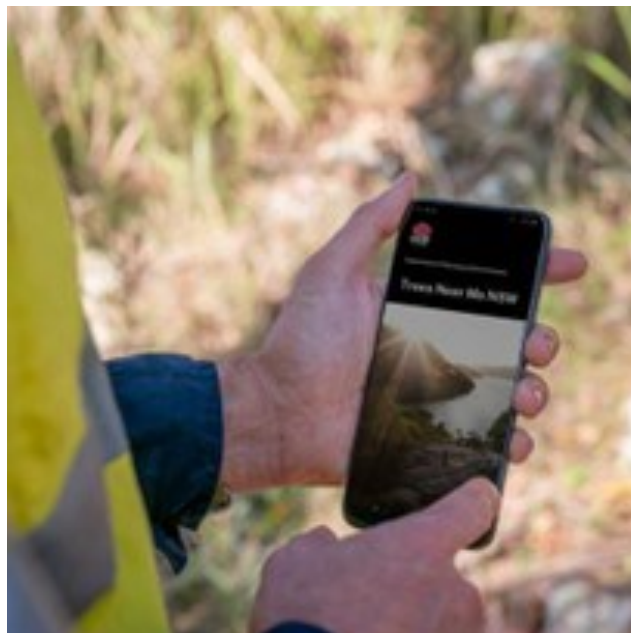
Trees Near Me NSW app has been designed to help everyone, including bush regenerators like Landcare, farmers and citizen scientists to easily discover information on native plant communities, trees and plants around NSW.

The newly released app draws on extensive vegetation classification and mapping available from the Bionet database developed over many years by the Department of Planning and Environment's (DPE) scientists.

An incredible number of maps and data are also available through the SEED website, which stands for Sharing and Enabling Environmental Data. Go to: <https://www.seed.nsw.gov.au>. Soils information is available at Soils Near Me: <https://soilsnearme.app>

These apps and online information can help Landcare planners and volunteers to identify the right animals, plants and soils as well as their importance for replanting and restoration.

The Trees Near Me NSW app is free to download,



easy to navigate and will take the guesswork out of choosing tree or plant species best suited to local areas.

Trees Near Me NSW app is free to download from Google Play and Apple app store. It is also available as a website at treesnearme.app. For more information on the app visit www.environment.nsw.gov.au/topics/animals-and-plants/biodiversity/nsw-bionet/state-vegetation-type-map/trees-near-me-nsw

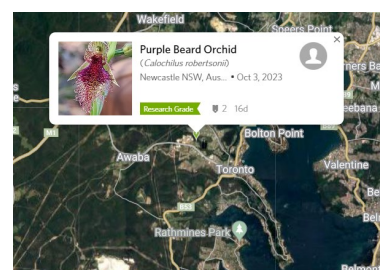
It does not stop there! Keep an eye out for more innovative tools coming soon including an app designed for landscape restoration called Restore Trees NSW and one that helps to identify biodiversity offsets called Credits Near Me

Visit our Department of Planning and Environment website for more information: www.environment.nsw.gov.au/

iNaturalist for Landcare sightings

Lake Macquarie Landcare now have an iNaturalist account! It is still best practice for Landcare volunteers to sign up and submit their own sightings, but for those that aren't into the tech, we can now submit their sightings. We will credit the images to the photographer when submitting. Send through any photos you would like recorded to lro@lakemac.nsw.gov.au.

If anyone would like to learn how to sign up and submit photo sightings themselves, Margo from the Sustainability Engagement team has offered to meet interested people at the Landcare and Sustainable Living Centre, just email or call us on 4921 0392 if you would like to get in touch with her.



Critter of the moment: Laughing Kookaburra

The Laughing Kookaburra is instantly recognisable in both plumage and voice. Winsome Lambkin, at Eleebana Residences Landcare, shared her captivating encounter with these iconic birds:

I was drawn to a decaying, tall, dead tree by a tap tap tapping noise emanating from a disturbed termites nest high above me.

I imagined it to be a kookaburra and fixed my camera on the rough hole. Meanwhile, I photographed two other kookaburras as they waited patiently and quietly on a nearby branch.

When would the tapping and excavating stop and the bird leave? Could I capture it in flight? Next, I noticed that its beak now protruded from the hole as it had turned around, ready to leave. Snap!



Photos and story by Winsome Lambkin

Native of the moment: Pine-leaved Bottlebrush

Common name: Pine-leaved Bottlebrush

Scientific name: *Callistemon pinifolius* (syn. *Melaleuca linearis*)

Distribution: Forests and woodlands in central New South Wales, usually in damp places.

Description: A small to medium shrub to 1.5 metres in height. The brushes are usually green in colour but red flowered forms are sometimes seen. Pine-leaved Bottlebrush has very narrow leaves, which are quite distinctive in comparison to the broader foliage of most other members of the genus.

References and further information:

<http://anpsa.org.au/c-pinif1.html>

<https://plantnet.rbgsyd.nsw.gov.au/cgi-bin/NSWfl.pl?page=nswfl&lvl=sp&name=Callistemon~pinifolius>



Right: Pine-leaved bottlebrush in flower at the Landcare & Sustainable Living Centre

Landcare sightings!

Check out these pictures contributed by Lake Macquarie Landcare volunteers and staff in recent months. Please keep sending in your photos and snippets for our newsletters, website and Facebook page.



Left: Our native birds have been enjoying their time at Kenibea Landcare, with Bob Spargo capturing these images of an Eastern Rosella, a male King Parrot, a Pied Currawong, and a Grey Butcherbird



Above: This detailed shot of *Isopogon anemonifolius*, commonly known as Drumsticks, was taken by James Hamilton of Ballantrae to Halewood Landcare



Right, top: This beautiful snake was snapped by Wendy Davidson at Keith Barry Oval Landcare site. It has been identified as a Dwarf Crowned Snake *Cacophis krefftii*.



Right, bottom: This bird has been identified by Bird Life Australia as a "Long billed Corella". The unusual colouring is assumed to be some sort of mutation (Photo by John Sharples, Arbre Close Landcare)

Plant sales from the Landcare nursery

Local tubestock for home gardens can be purchased from the Landcare nursery on Tuesdays and Wednesdays 8:30am - 3:30pm or by appointment.

Plants available for sales are also listed and described on our website www.lakemacquarielandcare.org.au and can be paid for in advance via EFTPOS over the phone.

Please call us on 4921 0392 for plant sales enquiries. Discounts are available for Landcare volunteers and Backyard Habitat for Wildlife Members – the discounted tubestock rate for 2023-24 is \$4.65 per forestry tube.



Would you like to contribute to our newsletters?

Perhaps you would like to promote a successful project, showcase what your group is up to or just share something interesting happening on your site. Please send your stories and photos to Kate Meares via email lro@lakemac.nsw.gov.au or post to **PO Box 97 Toronto NSW 2283**. Call Kate with any questions on 4921 0392. Deadline for articles for the next newsletter (January/February Urban Landcarer) is 12 December 2023.

Thank you to all the Landcarers who contributed stories, photos and information for this newsletter.

Please circulate this publication within your group or share it with your neighbours.

This publication (and much more) is available online www.lakemacquarielandcare.org.au

Sincere thanks to funders of current and recent grants:

- 2NURFM Radio
- Australian Government
- Delta Electricity
- Hunter Region Landcare Network
- Hunter Local Land Services
- Lake Macquarie City Council
- Greater Bank
- NSW Government
- Origin Energy

LANDCARE SUPPORT STAFF

Landcare Coordinator : Jason Harvey, **Finance & Admin. Officer:** Sue Edgar, **Landcare Network & Admin. Support Officer:** Debra Punton (M-T), **Landcare Program Delivery Officer:** Simon Lubinski **Landcare Support Officers:** Wendy Gleen (M-W), Amy Trello (T-F), **Landcare Publications & Grants Officer:** Kate Meares (T-F), **Landcare Communications Officer :** Stephanie Cassel (M-Th) **Site Maintenance and Nursery Officer:** Alex Wilson, **Apprentice Landcare Nursery Officer:** Stephanie Taylor

LAKE MACQUARIE LANDCARE VOLUNTEER NETWORK COMMITTEE

Chairperson: Marion Lugg, **Deputy Chairperson:** Lois Simpson, **Secretary:** Wendy Davidson **Treasurer:** Bob Montgomery **Other members:** Ruth Hinds, Pam Montgomery, Winsome Lambkin, Don Roach, and Nancy Lott, **Public Officer:** Garry Stewart.

Network Email: lmn@lakemac.nsw.gov.au

The opinions and views expressed within this newsletter are not necessarily those of Lake Macquarie Landcare Volunteer Network or Lake Macquarie City Council



Lake Macquarie Landcare
80 Toronto Road, Booragul NSW 2284
Box 1906 HRMC NSW 2310

Phone: 4921 0392
Email: lro@lakemac.nsw.gov.au
www.lakemacquarielandcare.org.au

Office hours:
Monday to Friday, 8am - 4pm



Lake Macquarie Landcare is proudly supported by Lake Macquarie City Council