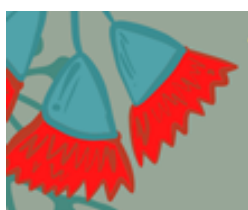


Inside this issue:

Christmas Party
invitation

2



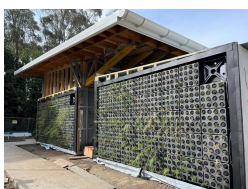
Chit Chat from the
Chair

3



Reconstruction update

5



Fridays in the Field

11



Critter of the moment

14

Snapped!

15

Landcare at the Living Smart Festival

Thanks to the volunteers that helped out at our stall at the Living Smart Festival on 24 September. We had lots of interest from passers by and visits to our stand, including Costa who dropped by and is very supportive of the Landcare efforts in our area. This year our stall was shared with Hunter Region Landcare Network. We were well positioned beside the native plant giveaway and Alex and Lois did a talk about garden escapes in the Grow Zone. The festival had a wonderful buzz all day and only had one fall of heavy rain - unfortunately right on pack up time!





YOU ARE INVITED TO THE
2022

Landcare
Christmas Party
&
Environmental
Excellence in
Landcare Awards

Friday 18 November 4 - 6pm
80 Toronto Road Booragul

Enjoy a preview of the new Landcare &
Sustainable Living Centre Umali Barai-ku, along
with nibbles and festivities

BOOKINGS ARE ESSENTIAL AS NUMBERS ARE LIMITED

RSVP by 8 November to 4921 0392 or lro@lakemac.nsw.gov.au

Chit chat from the Chair

By Lois Simpson, Chair Lake Macquarie Landcare Volunteer Network

What a great turnout at the Living Smart Festival and so wonderful to catch up. Thank you so much both to our wonderful Landcare staff and to our Landcare volunteers who gave time at our Lake Macquarie Landcare stall. Being close by the LMCC plant giveaway stall, we were able to talk with many residents keen to know more about Landcare, about weeds and about building a healthy native garden. Costa Georgiadis called by too and cameras clicked! How wonderful to get positive recognition from such an influential TV personality. All in all, a wonderful day - even the rain held off, at least until it was time to pack up. Nothing like folding up a gazebo in a deluge!

It's time now, with summer on its way, to look forward to our end of the year celebration. It will be another wonderful occasion for us all to get together, to

compare notes and to recognise achievements and hard work. The day the EEL awards are presented is perhaps the highlight of the year. I encourage all our Landcarers to attend. Celebrating each other's achievements will be a fine way to round off 2022! Please also consider nominating for a position on our Committee (see below).

It is difficult to finish with the sad news of the passing away of Carl Fulton, who was our vegetation officer for many years before ill health overcame him. Those Landcarers who worked with Carl will remember a kind, good-natured man, so dedicated to and passionate about Landcare, so supportive of our volunteers and so knowledgeable about his craft. Our thoughts are with his family in their time of grief. Vale, Carl.



Annual General Meeting and nominations invited

Nominations are invited for representatives for the 2023 Lake Macquarie Landcare Volunteer Network Committee. Positions include Chair, Deputy Chair, Secretary, Treasurer and Ordinary Committee Member.

The Network meets for a couple of hours on the second Tuesday of each month at 1pm. If you are interested in helping to shape the future of Landcare in Lake Macquarie and can spare a few hours each month, now is the time to join!

Nominations for all positions must be received by 2pm on the day of the Annual General Meeting which will be held 18 November 2:30pm-3pm at the Landcare office, 80 Toronto Road Booragul. Nomination forms are available online and can be obtained from the Landcare office (contact 4921 0392). Positions will be decided on at the AGM. All Landcare volunteers are invited to attend this meeting.

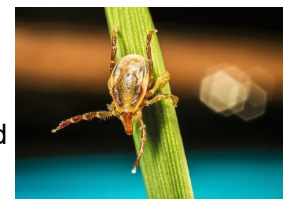
Tick Tock its Tick Time

Many of our volunteers may have encountered an increase in both mosquitoes and ticks on your Landcare sites over the past few weeks. Warm and wet conditions have meant that these insects have become more prevalent.

To protect against mosquitoes and reduce the risk of diseases they transmit: cover-up with a loose-fitting long sleeved shirts and long pants when outside; apply mosquito repellent to exposed skin; avoid working during peak mosquito biting hours, especially around dawn and dusk. Information on staying safe around mosquitoes can be found on the **New South Wales Health website** (www.health.nsw.gov.au/Infectious/factsheets/Pages/mosquito.aspx) .

The best way to prevent tick bites is to avoid tick-infested areas. If this is not possible, wear the

appropriate PPE as when protecting against mosquitoes. It is a good idea to tuck long pants into socks, and wear light coloured clothing to make it easier to see ticks on clothes before they attach to the skin.



Before entering possible tick infected environments apply an insect repellent to your clothes and/or skin. The repellent should be applied and re-applied according to the manufacturer's instructions. Clothing treated with permethrin is also recommended. More information is available on ticks and their removal at these websites: health.gov.au and healthdirect.gov.au

Please note tick bites or infestations on your daily diaries (blue sheets).

Nursery Production Ramps Up

The Landcare nursery staff and volunteers are ramping up production significantly this financial year. A number of large-scale revegetation projects are scheduled to be carried out by LMCC's Natural Areas Project team and contractors across the city in late 2022 and early 2023. It will see plant production numbers soar after a year dealing with COVID and extreme wet weather; from 23 300 tubestock last financial year to what we estimate will be 100 000 this year.

We're so proud of the whole Landcare nursery team and wish them luck in their plant propagation and potting up endeavours



Get your plant orders in for 2023

Now is a great time to look ahead to 2023 - including planting on your Landcare sites.

Growing plants for distribution from the Landcare nursery can take up to 6 months (for the plants that we have seed stock of). It is important to note:

- Some plants such as Coffee Bush (*Breynia oblongifolia*) and most Rainforest plants, produce seed that can't be stored and if seasons are not favourable some may not produce seed for a few years!
- For seed collection, limiting factors include:
 1. Weather conditions for this season
 2. Having a suitably diverse number of plants to collect seed from
 3. Seed needs to be within reach - many trees have seed well out of reach of even our tallest pole pruner!

Planning your work year.

- If your group does planting each year, it may be worthwhile to put in an advance order for plants. You can order a set number of plants with staged pick up, dates/months in line with working bees.
- We can help you choose the plants to suit your site. If you have specific species of plants in mind, ordering in advance will increase the likelihood of supply.

Please note that depending on the size of the order, the minimum notice required for plant orders is **up to 4 weeks**. If your group would like to plant next year, get in touch with us to secure your plant order now! Please email lro@lakemac.nsw.gov.au or phone 4921 0392.



Centre reconstruction update

Works are progressing and some services have commenced from the new building!

However, there is still ongoing construction for the car park so the official opening of the Landcare and Sustainable Living Centre Umali Barai-ku will be held early next year.

Landcare volunteers and visitors are reminded the Landcare office and nursery is closed to the public and 'drop-in' visits during the construction period. Appointments for all visits are required.

For appointments please contact the team on 49210392 or lro@lakemac.nsw.gov.au.



The green wall has been installed at the Landcare and Sustainable Living Centre, Umali Barai-ku. Using all locally native plants, Green Wall installation specialists Junglefy erected the wall which faces the car park and marks the entrance to the centre. It was their first time using a number of the plant species, which include *Correa alba*, *Dianella revoluta*, *Melaleuca thymifolia*, and *Westringia fruticosa*.

Keep an eye out for the Landcare Nursery

Landcare volunteers are asked to please let us know where you have seen developing seed of the following species. Please do not pick any seed as we have special requirements for collection that we need to follow, but we would love your tips on what is available and where. If it suits you, we would even love to have you with us for seed collections at your site.

It would be great if you can contact us on 4921 0392 or send photos to lro@lakemac.nsw.gov.au if you see any of the following with developing or ripe seed (note that we are only able to collect from areas where there are multiple seeds/ fruit on multiple plants):

- *Gompholobium latifolium* Golden Glory Pea
- *Glochidion ferdinandi* Cheese Tree
- *Acacia irrorata* Green Wattle
- *Acacia Implexa* Hickory Wattle
- *Breynia oblongifolia* Coffee Bush
- *Melaleuca* species



Vale Carl Fulton



Local nature guru, Landcarer and former staff member of Lake Macquarie Landcare, Carl Fulton, passed away in September at age 72. Carl was known and respected by so many Landcarers and will be greatly missed.

Our Landcare Coordinator, Jason Harvey, wrote these words in memory of Carl:

To those of us who shared the world of Bush Regeneration and Landcare with him, Carl Fulton was a guru. He was a wise, humble, calming presence who you could turn to for advice or support in any situation.

He loved nature and literature, was kind, articulate and funny and had the patience of a saint.

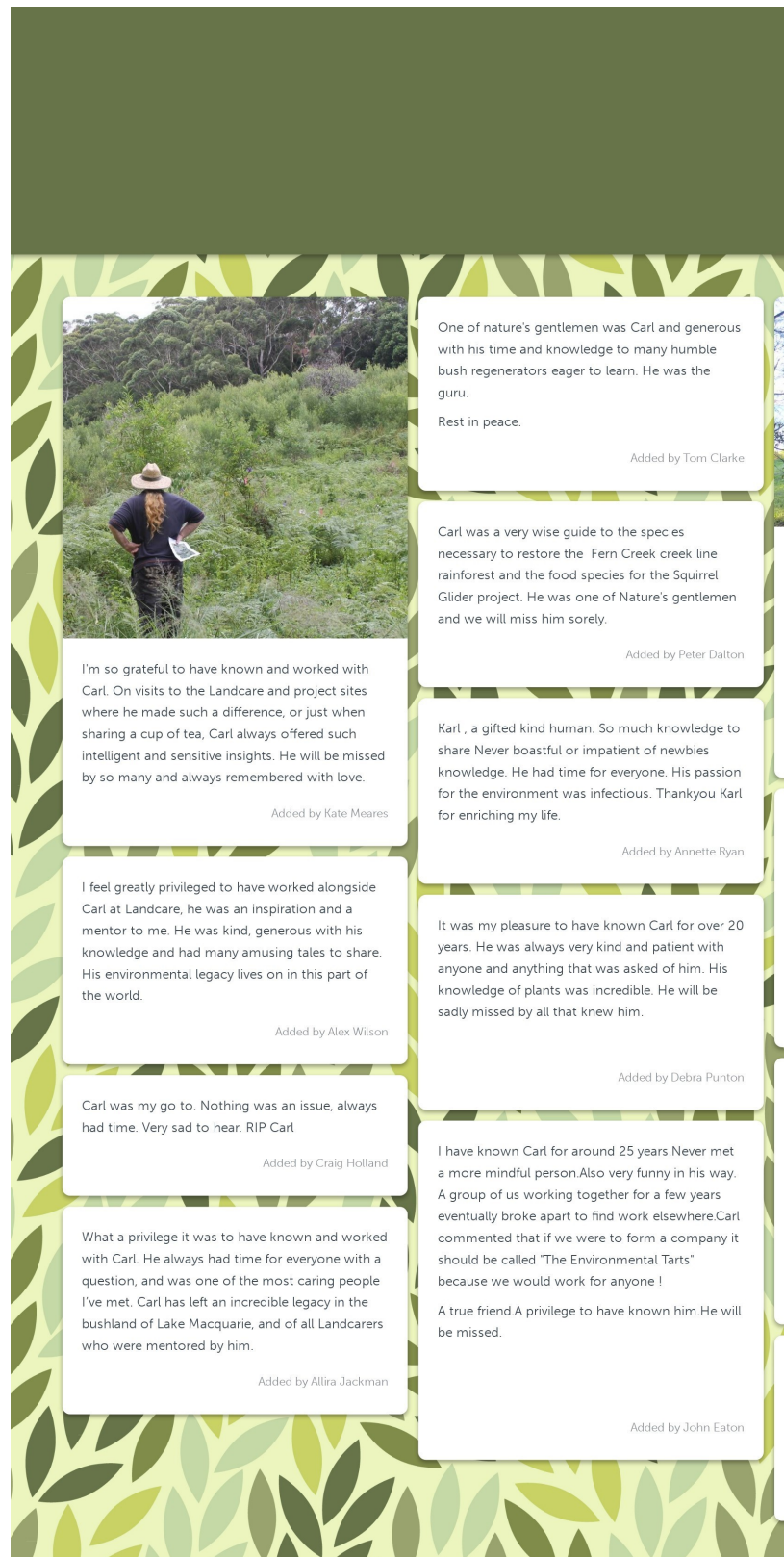
Among the teams that worked with him at Trees in Newcastle in the early 2000's and before, he was the shining standard of knowledge.

Among the Landcare groups of Lake Macquarie, having him visit their sites was an exciting treat, as they shared their successes with him.

And among the Bush Regenerators that started their careers with us, he was a teacher and mentor, always as interested in them as in their growth and development.

Carl was one of those people who you know your life is richer for having known, a sentiment I am sure is shared by many.

He was a good friend and he will be sorely missed.



One of nature's gentlemen was Carl and generous with his time and knowledge to many humble bush regenerators eager to learn. He was the guru.

Rest in peace.

Added by Tom Clarke

Carl was a very wise guide to the species necessary to restore the Fern Creek creek line rainforest and the food species for the Squirrel Glider project. He was one of Nature's gentlemen and we will miss him sorely.

Added by Peter Dalton

Karl, a gifted kind human. So much knowledge to share Never boastful or impatient of newbies knowledge. He had time for everyone. His passion for the environment was infectious. Thankyou Karl for enriching my life.

Added by Annette Ryan

It was my pleasure to have known Carl for over 20 years. He was always very kind and patient with anyone and anything that was asked of him. His knowledge of plants was incredible. He will be sadly missed by all that knew him.

Added by Debra Punton

I have known Carl for around 25 years. Never met a more mindful person. Also very funny in his way. A group of us working together for a few years eventually broke apart to find work elsewhere. Carl commented that if we were to form a company it should be called 'The Environmental Tarts' because we would work for anyone!

A true friend. A privilege to have known him. He will be missed.

Added by John Eaton

I'm so grateful to have known and worked with Carl. On visits to the Landcare and project sites where he made such a difference, or just when sharing a cup of tea, Carl always offered such intelligent and sensitive insights. He will be missed by so many and always remembered with love.

Added by Kate Meares

I feel greatly privileged to have worked alongside Carl at Landcare, he was an inspiration and a mentor to me. He was kind, generous with his knowledge and had many amusing tales to share. His environmental legacy lives on in this part of the world.

Added by Alex Wilson

Carl was my go to. Nothing was an issue, always had time. Very sad to hear. RIP Carl

Added by Craig Holland

What a privilege it was to have known and worked with Carl. He always had time for everyone with a question, and was one of the most caring people I've met. Carl has left an incredible legacy in the bushland of Lake Macquarie, and of all Landcarers who were mentored by him.

Added by Allira Jackman

We have set up a message board in memory of Carl (see above image). If you would like to contribute a message please visit kudoboard.com/boards/ztns084w and select 'add to board'

In memory of Carl



I was lucky to first meet and work with Carl, back in our old TIN days, and then again here at Landcare. Carl was a wonderful friend, always kind, gentle and supportive. He taught me so much, but it didn't even scratch the surface of all that he knew. His compassion, humour and overall philosophy on life made him an amazing person, who will be missed very much.

Added by Jason Harvey



Like so many have been very privileged to have worked with Carl on so many varied projects over the years. Photo attached of Carl circa 98 Rocky Creek Dam(Big Scrub Remnant) doing what he loved best "checking out " a bit of scrub.

True friend that will be sorely missed by all.

Added by Anthony Marchment

Carl was such a beautiful, unassuming man - I wonder if he knew how many lives he enriched in sharing his knowledge and always assisting and encouraging others to discover more about our native flora. It was my pleasure to work with Carl at TIN many moons ago, and other places since then - he will be fondly remembered by many. RIP mate.

Added by Sharyn Ryan-Hancock

Carl was always generous with his time and advice and an esteemed member of the great Warners Bay Landcare. Carl was an indispensable member of the LRO and of Warners Bay Landcare and personally helped with some wonderful advice at my site. At Warners Bay Landcare we have designated our North Creek site between John St and Albert St as Carl's Plot as he would have been in charge of this area if he hadn't got sick. Vale to a wonderful, generous friend!

Added by Stephen Dewar

I first encountered Carl in Green Point and then brought him to explore Floraville Rainforest Gully. The grand trees of the Owl's Knoll (Powerful Owl) swelled our hearts. His presence lives on. Winsome Lambkin

Added by Winsome Lambkin



Carl's passion for the local area as both a colleague and volunteer Landcarer has set a high bar for those of us who remain. He left an impression on many of us and knew the lower Hunter and Lake Mac City's vegetation like the back of his hand - no need for LakeMaps or any satellite images, just ask Carl 😊 what the ecosystem type was and species we could expect to observe.

He was always ready to share his amazing plant knowledge and love of literature with all of us. The gentle giant with a heart of green has left a special place in many hearts. I cannot think of him without a smile as I remember his presence and stories of weed removal at many sites including Green Point, Dudley, Swansea Heads and Crabbs Beach!

Carl has left an amazing a legacy for his children and grandchildren: like a native plant, his knowledge, passion and wonderment of the natural world has become deep rooted and strong and is now linking networks with so many others.

Image: Carl sharing his knowledge on flame retardant species planted adjacent to Landcare Centre Nov 2010

Added by Margo

Very grateful to have met & worked with Carl at TIN, I was always happy to have the opportunity to go on seed collecting expeditions with him & the vollies. Such a generous & bloody funny man on all things environmental/plants & other....

Thanks Carl, for all that you taught me & sharing your love of the bush.

Wirh gratitude & smiles Cate Paton

Added by Cate Paton

It was an honour to have known and worked with Carl at Landcare. A true gentleman who was always so generous with his knowledge, time and kindness. Carl has left such an impact on the environment and community of Lake Mac.

Added by Lucy Kelliher

For me, Carl was inspirational. He was so knowledgeable, so supportive and so generous. He may be gone from us in person now, but, through Landcare, his spirit will always live on.

Added by Lois Simpson

Carl was a wonderful friend and an inspirational Landcarer; an original member of Warners Bay Landcare in 2000 who guided us from our inception.

Rest In Peace, Carl, we will never forget you!

Ann and Rob Loughran

Added by Ann & Rob Loughran

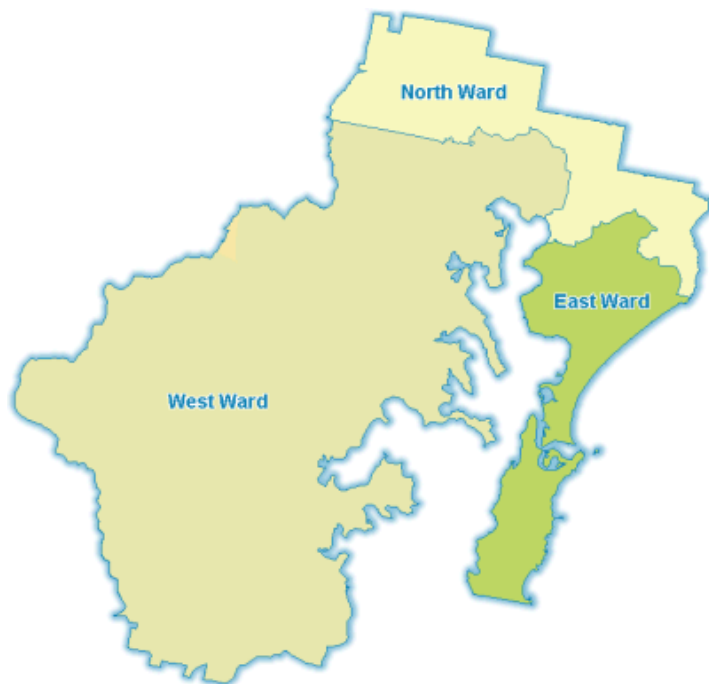
It was a pleasure and privilege to know and work with Carl. I learnt so much from just walking over sites with him. He supported us with his detailed knowledge and skills unreservedly. I will never forget his positive attitude to some of the most problematic and weed infested sites including Green Point. A true inspiration with his work living on all around us.

Added by Robbie Economos

Landcare groups seeking members

The following groups would like to attract new volunteers. If you would like to advertise or update your group's details on this page and our website, please contact us on 4921 0392.

The groups have been organised under wards and suburbs to make them easier to locate, especially for those wishing to volunteer close to home (see map at right of wards in Lake Macquarie).



East Ward Groups

Suburb	Group Name	Meeting Time	Contact Details
Blacksmiths	Blacksmiths Beach Dunecare	Every 2nd Wed of the month, Meet at 9am at 8 Carawa Street, Blacksmiths	LRC 4921 0392
Blacksmiths	Pelican Area Sustainable Neighbourhood Group	Varies	Greg 49714808
Catherine Hill Bay	Catherine Hill Bay Landcare	First Mon of the month, 3-5pm at Carpark at Graveyard Beach	Carmel Brown 0438 499 636
Dudley	Fern Creek Landcare	1st Saturday of the month 8:30 – 12 noon	Gabi 0478 670 146, www.facebook.com/FernCreekLandcareDudley
Eleebana	Stobbs Creek Landcare	Every three weeks, 8:30-10am	LRC 4921 0392
Floraville	Floraville Ridge & Rainforest Reserve	Variable	Winsome 4945 4336
Jewells	Ballantrae to Halewood	Varies	LRC 4921 0392
Pelican	Lakeview Parade Pelican	Monthly, usually on Wednesday mornings	Ted 0418328466, tedlougher@hotmail.com
Swansea	Lakeside Drive Landcare (cnr Wallarah St & Lakeside Dr)	Every 2nd Wed 8:30am-3pm and Fri 9am - 3pm	Garry 0400 033 006
Valentine	Allambee Gardens Reserve Landcare	Last Sun of month 2-4pm	LRC 4921 0392
Valentine	Green Point Foreshore Reserve Landcare	Every Wed 8-11am	LRC 4921 0392
Warners Bay/ Eleebana/ Lakelands	Warners Bay Landcare	Usually 1st Sun, 2nd Thurs and 3rd Fri of the month, 9am-12noon	LRC 4921 0392

*** Have your group details changed? Please contact the LRC on 4921 0392 to update ***

West Ward Groups

Suburb	Group	Meeting Time	Contact Details
Bolton Point	Awaba Bay Landcare	1st Sun of each month, 9am-12noon, The Ridgeway between Bolton Cl & Fulton Cl	LRC 4921 0392
Carey Bay/ Coal Point	Coal Point Progress Association Landcare	Every Thursday 8am-12:30pm	LRC 4921 0392
Eraring	Payten Street Landcare	Variable	LRC 4921 0392
Fennell Bay/ Bolton Point	Kooroora Bay Landcare	8.30-11.30am, first and third Wednesday of every month (please call to confirm)	Tony 040 889 1411
Mirrabooka	Dandaraga Road - Fishery Point Landcare	1st Thursday or 3rd Saturday of each month.	Email Wilma on wilvk123@gmail.com or call LRC 4921 0392
Morisset	Lakeside Retirement Village Landcare	Varies - several times a month	LRC 4921 0392
Morisset	Yunung Landcare	1st Wednesday of the month and as needed	LRC 4921 0392
Sunshine	Sunshine-Silverwater Landcare	1st Saturday & 3rd Thursday mornings of each month	LRC 4921 0392 or email Marion melugg2@gmail.com
Toronto	Toronto Lions Park	2nd Friday of the month, 8-10am	LRC 49210392
Toronto	Toronto Greenway Landcare	Every Sat from 8am.	LRC 4921 0392
Wangi Wangi	Wangi Landcare (Oval site Cnr Donnelly Rd & Dobell Dr)	Last Tues of the month, 8-10am	Janet White 4975 5715
Wangi Wangi	Dobell Drive Reserve Landcare	2nd Sun of the month 8am –10am	LRC 4921 0392
Wangi Wangi	Myuna Bay Landcare	2nd Fri of the month, 9am – 12noon.	LRC 4921 0392 or email rmontgomery962@gmail.com
Wangi Wangi	Wangi Ridge Preservation Board Landcare	Sun, 8-10am, meet at water tank at Cres Rd	LRC 4921 0392

North Ward Groups

Suburb	Group Name	Meeting Time	Contact Details
Cardiff	Afton Close Landcare	2nd & 4th Sat of month 9-12, end of Close	LRC 4921 0392
Charlestown	Flaggy Creek Landcare	2nd Sat of the month, 8am, meet at corner of Kaleen & Wakal Sts	Robert Gibson 4943 7486
Holmesville	West Wallsend District Landcare	Third Sunday of the month from 8am Eastern Summer Time, 9am for the rest of the year, Western end of Elizabeth St. Holmesville	Paul Lindsay – Secretary, WWDSNG 4953 2252
Kahibah	Kenibea Landcare (Cnr Kenibea Ave & Ocean View Pde)	Variable	LRC 49210392
Kotara South	Tathra Landcare	Variable Sundays 8-10am. Meet at end of Neerim Ave	LRC 4921 0392
Mount Hutton	Mount Hutton Landcare	Fridays, from 8:30am	LRC 4921 0392
Rankin Park	Central Rankin Park Landcare	Wednesdays, Sundays	LRC 4921 0392

An abundance of flowering natives following Watsonia removal at Sunshine Silverwater Landcare



The beautiful collage above was made by Marion of Sunshine Silverwater Landcare, and showcases the wonderful diversity that comes from the restoration of a strip previously over-run with Watsonia bulbs (see 'before' photo at right).

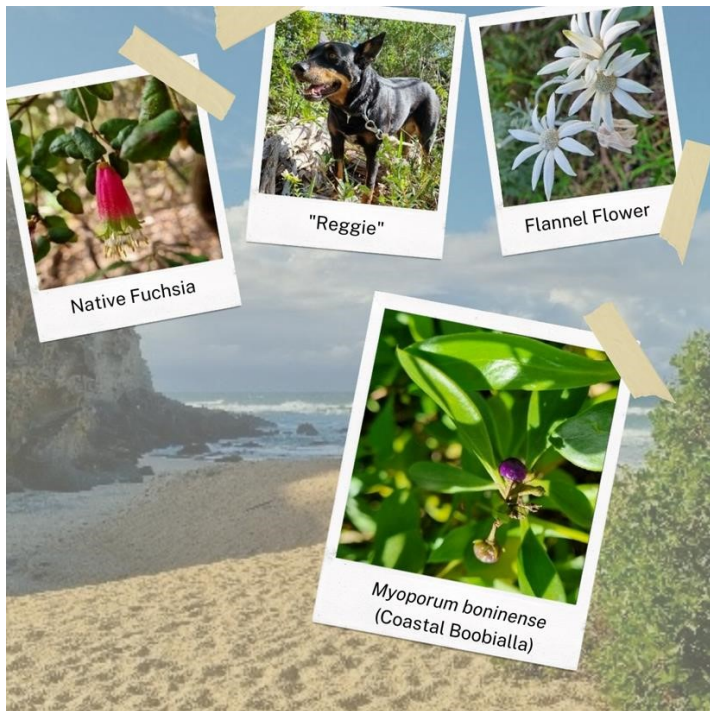
Wild Watsonia is a native of South Africa and was introduced to Australia as an ornamental garden plant. It is a major environmental weed of disturbed bushland and roadsides, particularly near water.

This roadside strip along Cessnock Rd, that might commonly go unnoticed, is now home to extraordinary beauty and value! Emerging natives include Guinea Flower, Mulga Fern, Trigger Plant, Themeda, Dianella, Lomandra, Rice-flower, Rush-lily, and Bush-pea!



Fridays in the field

Follow us on Facebook to see our regular segment 'Fridays in the Field' with Landcare staff. Here are some snippets from recent weeks.



Returning with the Green Team this week it was such a delight, having walked in past wall to wall weeds, to turn the corner and see a gorgeous patch of establishing forest, reflecting the persistence and hard work of the group. Inspired, we attacked a new section of Cape Ivy (*Delairea odorata*) with vigour. The tip of the site is a natural point surrounded by the lake so by confining the scope of works to this defensible section, the group has succeeded in pushing back the wall of Cape Ivy and Buffalo. What looked scary is now thriving with natural regeneration and healthy plantings.

Congratulations to the team!!!



12 August by Steph

Alex and I set out to Redhead Bluff in search of seed and cuttings for the Landcare Nursery, now that we're coming into a change in seasons.

We collected some *Myoporum boninense* (coastal Boobialla), pictured here. It has a small white flower and fruit that turns from green to purple. It can be confused with *Chrysanthemoides monilifera* (Bitou Bush), which has rounder leaves, yellow flowers and black fruit.

We met our bush guide Brian Hilton and set off in search of seed and cuttings. We passed *Pimelea linearifolia*, *Pandorea pandorana* and *Banksia integrifolia* all in flower.

Deep into the bush were some *Actinotus helianthi* (Flannel Flower) and some *Correa reflexa* (Native Fuchsia). Cuttings were taken of both and also some fruit from the *Correa*. Thank you to Landcarer, Brian, and his kelpie for being such great guides!

2 September by Wendy

Karen and her team at Lakeview Drive Morisset Park are achieving miracles. Almost every weed in the textbook lives here and the challenge of restoring this Endangered Ecological Community was truly daunting.

2 October by Amy

Last Thursday saw the Cain Street Landcare group in Redhead and the Green Team methodically removing Madeira Vine reshoots and tubers. There were 7 of us in total. The group has devised a plan to stay on top of this weed bit by bit and targeting it near the end of their weekly work day. A nice effort by the Cain Street Landcare group. Endeavour to persevere.



An Intergenerational Landcare Story with Peter Dalton and Gabrielle Stacey

Local Landcarers Gabrielle Stacey and Peter Dalton of Fern Creek Landcare presented at the 2022 National Landcare Conference. Gabrielle and Peter recounted how they combined the Landcare experience and institutional knowledge of an older generation with the marketing knowledge and fresh perspective of a diverse younger generation — showing how intergenerational partnerships are the key to greater and longer-lasting Landcare success. Well done Gabby and Peter!



You can catch their presentation [here](#) and watch a video about their story [here](#). The National Landcare Conference was held in August, hosted by Landcare champion and ABC TV presenter Costa Georgiadis.

You can catch up on any presentations you missed online, including a presentation by local Landcarers Gabrielle and Peter of Fern Creek Landcare. Visit www.landcarer.com to view the conference materials and presentations.

Garden help from Family Day Care kids

Our nursery officers, Alex and Steph, have had some eager little hands helping out in the garden and in the construction of an insect hotel.

Insect hotels are a collection of small hollows that can be used by native bees or other insects looking for a place to rest and lay eggs. Our hotel structure was made from all recycled materials and utilised weeds like Giant Reed and Lantana, as well as Privet for the larger logs.

The little ones, from Lake Macquarie Family Day Care, got their hands dirty with clay and placed some logs onto the hotel to attract some buzzing friends.



The kids had fun and we'll all enjoy seeing the hotel once it is placed in the garden, busy with its insect guests.

Single use plastic ban - new items banned from 1 Nov

A reminder that legislation is now in place to ban certain single-use plastic items across NSW, including lightweight plastic shopping bags. From 1 November, additional bans on single-use straws, stirrers, cutlery, plates, bowls, expanded polystyrene food containers, plastic cotton buds and rinse-off personal care products containing plastic microbeads will be in place.



Keeping in touch with Lake Macquarie Landcare

At Lake Macquarie Landcare, we are working to maintain engagement with our Landcare community in safe and diverse ways. Please like us on Facebook and sign up to our fortnightly e-newsletter - this is the best way to keep up to date with our news and events and opportunities for online engagement.

You can subscribe to our fortnightly e-news online at www.lakemacquarielandcare.org.au or email us at lro@lakemac.nsw.gov.au

If you have suggestions for how you would like to see us engage with you, or have ideas for maintaining connections with your group, we would love to hear them! Please email lro@lakemac.nsw.gov.au

Please keep engaging with Lake Macquarie Landcare through these channels:

Email newsletter



Subscribe to our fortnightly e-newsletter

Email lro@lakemac.nsw.gov.au

Website



www.lakemacquarielandcare.org.au



Facebook

www.facebook.com/LakeMacLandcare



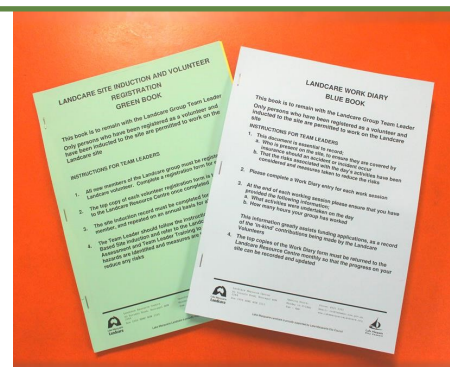
Youtube Videos

www.youtube.com/LakeMacLandcare

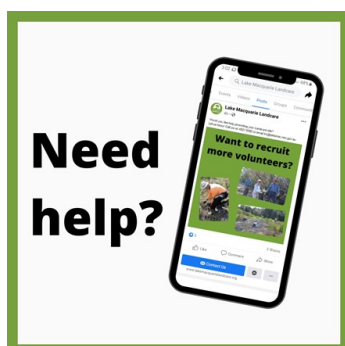
Blue and green sheet reminder

Landcare groups are reminded to complete their Blue Book work diary entries (or yellow books if you are a lone worker) and Green Book induction sheets. These are important Work, Health and Safety records and are vital in ensuring that volunteers continue to be covered by Council's and Landcare's Personal Accident insurance. If a volunteer is injured while working on a Council site, they will only be covered under Council's Personal Accident insurance if they have signed-on that day in their work diary. Importantly, the information from your work diaries is also required when your group wants to apply for funding and/or support.

Need help getting your diaries in? Please contact us on 4921 0392 if you have any questions about how to complete your Landcare diaries. We can also send you new work diaries and reply paid envelopes to assist you in returning completed diaries to us.



Promoting your Landcare site



A reminder that Landcare staff are available to assist in developing promotional materials and promoting events through our Facebook page, fortnightly e-newsletter and monthly hardcopy newsletters. We can help get the word out about your Landcare site and help to encourage people to join you at your next working day,

If you would like assistance in attracting volunteers to your site, contact us on 4921 0392 or email lro@lakemac.nsw.gov.au

Weed of the moment: *Acacia saligna*

Golden wreath wattle (*Acacia saligna*) is native to Western Australia but has been introduced to the East Coast and has become a weed. It out-competes native plants and threatens the integrity of local ecosystems. *Acacia saligna* was introduced for dune stabilisation in the Lake Macquarie region following extensive sand mining operations.

It spreads by:

- Producing masses of seed pods that ripen on the tree and disperse with the help of birds, ants and small native mammals.
- Regenerating from seed and suckers, enabling it to spread rapidly
- Having a seed dormancy of up to 20 years!

It has an extensive horizontal and vertical root system, which is why it was initially planted as a dune stabilising species. Fire stimulates regrowth, so vigilant follow up is required in areas subjected to hazard reduction burns and bushfire.



Critter of the moment: Dusky Antechinus

By Landcare Support Officer, Wendy Gleen

I was baled up on a huge moss- covered log surrounded by leeches and jumping ants and plotting my escape when a quick movement from under the curve of the log got my attention. A tiny, pointed nose appeared - disappeared - and then a little creature, with movement so fast it seemed to flicker in and out of existence, was right there at my feet foraging briskly over the peeling bark, completely unconcerned by my presence. It looked like a miniature bandicoot, or perhaps a shrew, about the size of a small lemon. As I held my breath, it was gone as quickly as it had come – and I could hardly believe I'd just seen my first Dusky Antechinus (*Antechinus swainsonii*).



Photo credit: David Paul, Museums Victoria

Though miniscule, these are ferocious little creatures. They feed on anything their own size or smaller and help to keep insect populations under control. They are classed as carnivorous marsupials – dasyurids, thus related to Tasmanian Devils. Thank goodness they are so small or they would be terrifying! If you get a close look, their pointed snout (which contains rows of needle- sharp teeth) differentiate them from the feral House Mouse which has two pairs of incisors at the front of their jaw, and a blunter nose.

Antechinus, like many other dasyurids, have quite an extraordinary life history. They all have the same birthday - within about a 2-week period - which means that (in late winter) they all come in to breeding season at the same time and age. Not even one year old, males go looking for females with such single-minded intensity that they neglect food and rest and build up corticosteroids – stress hormones – to the point that they basically mate themselves to death. The entire male population keels over and dies. It seems like a risky strategy for the species perhaps but would presumably reduce pressure on resources, with the possible benefit of allowing females a better chance of success to bring up her (up to eight) joeys.

Several species of Antechinus are found in Lake Macquarie and recent sightings by Landcarers and bush regenerators like Brian Hilton of Redhead Bluff Landcare give hope that these populations are still thriving locally, indicating a healthy ecosystem.

Snapped!

Check out these pictures contributed by Lake Macquarie Landcare volunteers and staff in recent months. Please keep sending in your photos and snippets for our newsletters, website and Facebook page.



Above: *Tetradlea juncea* (Photo by Hugh Robertson from Green Point Foreshore Reserve Landcare)



Above: Anemone Stinkhorn Fungi (Photo by John Sharples, Arbore Close Landcare)



Above: Gahnia in flower (Photo by Wendy Davidson of Coal Point Progress Association Landcare)



Vanilla Lily (above) and Common Crow Butterfly (below) (Photos by James Hamilton of Ballantrae to Halewood Landcare)



Plant sales by appointment only

Local tubestock for home gardens can be purchased from the Landcare nursery by appointment. Plant sales can be made over the phone Mon – Wed 8:30am to 3:30pm with pick ups preferred 9am-12noon Tuesdays and Wednesdays.

It is greatly appreciated if plants are chosen from the list on our website www.lakemacquarielandcare.org.au and paid for in advance via EFTPOS over the phone. Arrangements can be made for purchased plants to be collected from the LRC at 80 Toronto Rd Booragul.

Please call us on 4921 0392 for plant sales enquiries. Discounts are available for Landcare volunteers and Backyard Habitat for Wildlife Members – the discounted tubestock rate for 2021-22 is \$4.05 per forestry tube.



Would you like to contribute to our newsletters?

Perhaps you would like to promote a successful project, showcase what your group is up to or just share something interesting happening on your site. Please send your stories and photos to Kate Meares via email lro@lakemac.nsw.gov.au or post to **PO Box 97 Toronto NSW 2283**. Call Kate with any questions on 4921 0392. Deadline for articles for the next newsletter (January/ February Urban Landcarer) is 12 December 2022.

Thank you to all the Landcarers who contributed stories, photos and information for this newsletter.

Please circulate this publication within your group or share it with your neighbours.

This publication (and much more) is available online www.lakemacquarielandcare.org.au

Sincere thanks to funders of current and recent grants:

- 2NURFM Radio
- Australian Government
- Delta Electricity
- Hunter Region Landcare Network
- Hunter Local Land Services
- Lake Macquarie City Council
- Greater Bank
- NSW Government
- Origin Energy

LRC SUPPORT STAFF

Landcare Coordinator : Jason Harvey, **Finance & Admin. Officer:** Sue Edgar, **Landcare Network & Admin. Support Officer:** Debra Punton (M-W), **Landcare Program Delivery Officer:** Simon Lubinski **Landcare Support Officers:** Wendy Gleen (M-W), Amy Trello (W-F), **Landcare Publications & Grants Officer:** Kate Meares (T-F), **Landcare Communications Officer :** Stephanie Cassel (T-Th) **Site Maintenance and Nursery Officer:** Alex Wilson, **Apprentice Landcare Nursery Officer:** Stephanie Taylor-Peters

LAKE MACQUARIE LANDCARE VOLUNTEER NETWORK COMMITTEE

Chairperson: Lois Simpson, **Deputy Chairperson:** Marion Lugg, **Secretary:** Ruth Hinds **Treasurer:** Bob Montgomery **Other members:** Pam Montgomery, Winsome Lambkin, Don Roach, Wendy Davidson and Nancy Lott, **Public Officer:** Garry Stewart.

Network Email: lmnl@lakemac.nsw.gov.au

The opinions and views expressed within this newsletter are not necessarily those of Lake Macquarie Landcare Volunteer Network or Lake Macquarie City Council



Lake Macquarie Landcare
80 Toronto Road, Booragul NSW 2284
Box 1906 HRMC NSW 2310

Phone: 4921 0392
Email: lro@lakemac.nsw.gov.au
www.lakemacquarielandcare.org.au

Office hours:
Monday to Friday, 8am - 4pm
(appointments required)

Lake Macquarie Landcare is proudly supported by Lake Macquarie City Council

