

## Inside this issue:

Flying Fox mini-seminar video 2



Small animals and vegetation structure 4



Fridays in the Field 5



Groups seeking members 8

Critter of the moment 14

Snapped! 15

## New audiences for the Landcare and Sustainable Living Centre

Since the new Landcare and Sustainable Living Centre, umali barai-ku, opened in February a range of new users have enjoyed the facility. New audiences have enjoyed a diverse range of activities at the centre in the past couple of months, including:

- History talk for over 55s
- Introduction to plant propagation (over 55s program)
- Tovertafel workshop (over 55s program)
- School of Earth
- Crop Swaps
- Sustainable Neighbourhood events and meetings
- Family Day Care visits
- Hunter Region Landcare Network

Ageing and Disability Support Officer, Peta McGrath, said her Over 55s program participants have been very impressed with the new facilities.

“We have shown the video of the green wall at the beginning of each session and attendees have been very interested and thanked us. People have commented that they feel comfortable in the community room as it is spacious, great air flow and plenty of light as they are still very conscious of COVID in the community”.



**Top: A Tovertafel is an interactive light and table set-up useful for learning and engagement experiences including for people with dementia. Middle: Many new groups enjoyed a tour of the facilities as part of their activities. Bottom: A propagation workshop for over 55s**

# Flying fox mini-seminar

In February, attendees of our new centre opening events had the opportunity to learn about flying foxes and their unique role in our ecosystems. Did you know that flying foxes help pollinate and ensure healthy diversity in our trees and forests? They also help regeneration through dispersal of seeds in their droppings. To find out more about these special creatures you can watch a video of the talk on our YouTube channel [www.youtube.com/LakeMacLandcare](http://www.youtube.com/LakeMacLandcare)



If you missed our flying-fox seminar in February, you can watch a recap video on our YouTube page. We would like to thank Hunter Wildlife Rescue for bringing in this adorable flying-fox, and everyone who came to learn about their vital role in our ecosystem.

## Protecting local flying fox habitat

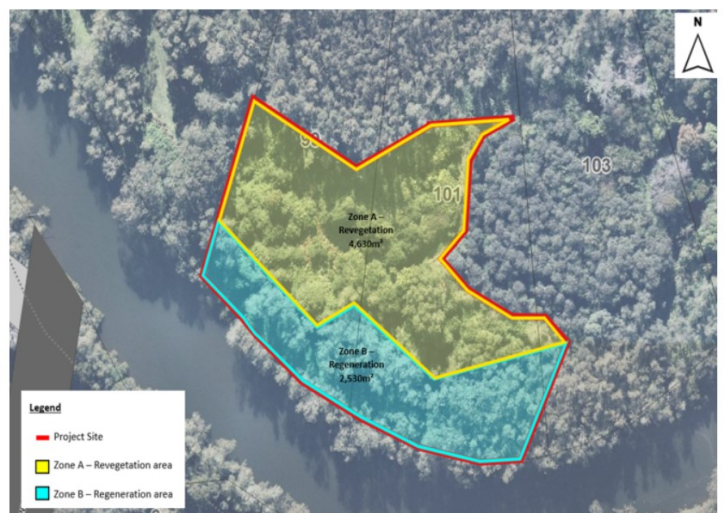
With funding support from Local Government NSW, Council are working to restore flying fox habitat at Blackalls Park.

The project will restore and enhance flying fox camp and foraging habitat to encourage flying foxes to use the centre of the camp and reduce the impact of flying foxes on neighbouring properties.

### Upcoming works

- Preparing for planting in Zone A
- Installation of 330m sediment fence in Zone A
- Laying 654m<sup>3</sup> of mulch (minimum depth 150mm) in Zone A
- Ongoing weed management (herbicide treatment, slashing and hand removal) in Zones A and B

Take part in the survey about community attitudes towards flying foxes by visiting: [www.surveymonkey.com/r/LakeMacFlyingFoxes](http://www.surveymonkey.com/r/LakeMacFlyingFoxes)



# Reflecting on Boughton Point Landcare site

By Margaret & Robert Conners

When you are busily removing mothers-of-millions, asparagus ferns, and the many bushland weeds infesting your Landcare area, do you ever stop and think about the people who have gone on the land before you? We have often wondered why our beautiful Landcare area located on the stunning promontory on Lake Macquarie in the suburb of Bolton Point is named Boughton Point. The point is named after John Herring Boughton who purchased some of the land around this area in July 1833. In September 1854 he died in a boating accident. You can read more about John Boughton and the local area's history at <https://history.lakemac.com.au/>

We know from remaining evidence that the local Awabakal people found the small area around the rock platform to be a reliable source of seafood and the nearby bushland was stocked with animals which provided them with a well-rounded diet. Did this site have an Awabakal name? We'd love to know more.

We have been Landcaring at Boughton Point for many years and the site is particularly special to us because it is the home of an interesting variety of native birds and animals. We hope that our work goes some way in restoring the site to its original condition.



Boughton Point Landcare started in 2012. It is surrounded by three vegetation communities with the most dominant being a community of Spotted Gum. A band of Swamp Oak Forest fringes the Lake edge with a wind-sheared remnant of Littoral Rainforest species on the rocky Point itself. A *Ficus rubiginosa* - Port Jackson Fig sits near the rocky point. On top of the hill overlooking the Point, is a mix of grasses and small twining vines. Before the Landcare site formed the area was mown. The smaller trees in the middle of the photo are a part of the site's natural resilience.

## Neighbours gather to help at Clipper Close

Clipper Close is an amazing Landcare site overlooking Caves Beach. The site has had a lot of regeneration works happening over the last number of years, with a Hazard Reduction burn in 2019, professional bush regeneration follow-up from LMCC's Bush Regeneration teams, and a dedicated Landcare Group providing much needed weeding maintenance across the site.

Last month, 26 helpful neighbours came together to support a regeneration project onsite. Guided by Team Leaders Kiri and Mark, and with the help of the Green Team, an area with low native resilience was prepped with targeted weeding, mulch and planted with local provenance native plants to support the extensive weed management program onsite.

Previous targeted weeding has removed and treated *Acacia saligna*, a weed from Western Australia and ongoing maintenance weeding will be occurring at the site to manage weed regrowth amongst new native plants. If you would like to learn more about this site or get involved please contact the Landcare office on 4921 0392.



# Small animals and vegetation structure

By Landcare Support Officer, Wendy Gleen

An earlier article considered how vegetation structure - the arrangement of plants and their parts - affects a local kangaroo population. It is even more important for small animals, being crucial for their survival and shaping their whole life.

Several years ago I undertook a masters by research project looking at how small mammals respond to urban edge effects. To gain a rats-eye view of the bush and its hidden pathways, I attached a miniature cotton reel backpack to some native bush rats, tied the loose end of the cotton to a tree, and released them. The ultra-fine thread would catch on the vegetation as they moved along, preserving their path for me to come and trace the following day. All rats got a peanut butter ball in payment, the backpacks detached during the first 12 hours and no animals were harmed.



Above: Bogul (native bush rat) *Rattus fuscipes* Photo credit Wendy Gleen, Taronga Zoo.

It was fascinating to follow their trail, the thread was a criss-crossed tangle underneath dense vegetation, indicating they spent more time there, but it followed straight lines across open spaces, where they darted across.

This and some other work gave us a peek at how animals constantly juggle sophisticated cost/benefit decisions to balance three basic life requirements – safety from predators, obtaining food and avoiding fatigue (energy use). The structure of vegetation in an animal's home range affects all of these factors; the way they move, shelter and forage, and decisions are crucial: there may be a juicy patch of berries ahead, but to get to it you have to cross an open space. Is exposure to predators too risky? Or maybe it's actually safer in the open patch where you can see predators approaching?

Ecological theories around habitat use ultimately inform best practise in bush regeneration techniques – it's important to consider how weeds and their removal affect local fauna.



Fig 1: the weed honeysuckle *Lonicera japonica* forming a low, tangled mat



Fig 2: complex, layered native vegetation structure

For example, at Dorrington Rathmines the weed honeysuckle forms a low mat -like structure of tangled stems which would impede travel by small mammals like bush rats (Fig 1). Compare the structural complexity of a healthy native patch just two metres away (Fig 2) which small mammals can hide under or travel through. As well as improving flora diversity, the local Landcare group is improving habitat for fauna as they tackle this weed infestation.

## References and further reading

- Bennett, A. F. "Microhabitat use by the long-nosed potoroo, *Potorous tridactylus*, and other small mammals in remnant forest vegetation, south-western Victoria." *Wildlife Research* 20.3 (1993): 267-285.
- Charnov, Eric L. "Optimal foraging, the marginal value theorem." *Theoretical population biology* 9.2 (1976): 129-136.
- Gleen, Wendy. "Life on the edge: Population and behavioural responses of the native bush rat to invasive species at the urban edge." *Master's thesis*, University of Sydney, 2013.

# Fridays in the field

Follow us on Facebook to see our regular segment 'Fridays in the Field' with Landcare staff. Here are some snippets from recent weeks.



## 3 March by Stephanie Taylor-Peters

I finally decided it was time to step out from the nursery and do some real dirty work! In late February I finally got out and started Landcaring at Nords Wharf, a breathtaking site beholding some of the last remnants of Permian Rainforest Gully in Lake Macquarie!

At first I was a bit overwhelmed after having had a walk around site to investigate all the Ochna, Senna, Lantana, Broad leaf privet and Asparagus fern- but past a screen of privet I peeped a beautiful clearing at the heart of the site. It was a very idyllic place to start and so I grounded myself remembering I'll just clear this 10 square meters and then eventually push out.

Thank you to the site (photo above) for the gift of one leech and one tick. And thank you to my PPE for keeping them off my skin. I'm excited to make progress and help restore the site to its former glory.

## 10 March by Amy Trello

A forest scene (photos below) and some Forest Bathing at Flaggy Creek Landcare in Charlestown was set for the Green Team on the first day of autumn. While weeding we took in the beautiful sights and sounds along this section of the Great North Walk. The dappled light and vegetation colours complemented one another. Not a bad way to start off the day. Landcarers, please remember to take in the sights,



sounds and smells while out on your sites. You might just be Forest Bathing.

The tree is *Corymbia gummifera* or Red Bloodwood. This specimen is a beautiful straight stem tree with tessellated bark and a well balanced canopy. Its white creamy flowers appear between December and June.



## 17 March by Wendy Gleen

At Dobell Drive Wangi – such a pleasure to help this Landcare group which has been running since 2012. Minutes after this photo was taken, Wendy suffered the old 'jumping ant up the trouser leg' trick and gave a fine demonstration of some funky dance moves. A reminder to tuck your pants into your socks!

Shrubby weeds are often under guard from ant nests, which can be frustrating, but on this occasion, we had a secret weapon of our own: Captain Marvel (aka Simon) and his long-handled chainsaw was nearby, so this bitou bush was still defeated – from a safe distance. A nice example of applying an 'engineering control' to a workplace hazard! If you find biting insects on your Landcare site, communicate the risk to others and, obviously, move away to work in another area (eliminate the risk). As always, contact Landcare staff if you need further assistance or advice.



# Community electric vehicle open day

Saturday 13 May, 10am-2pm  
Council Administration Building, 126-138  
Main Road, Speers Point

Learn about owning and driving an electric vehicle at this free community day with:

- Test rides
- Talks with local electric vehicle owners
- Viewings of the latest car models
- Displays of electric vehicle charging from experts and installers
- Bring the whole family and enjoy the free rides, activities, pizza and gelato.



This is a free event, and registrations are not required to attend.  
Registrations are required to experience a test ride, opening 1 May.

Learn more and register at [www.lakemac.com.au/Events-directory/Council-events/Community-Electric-Vehicle-Open-Day](http://www.lakemac.com.au/Events-directory/Council-events/Community-Electric-Vehicle-Open-Day)

---

## Keeping in touch with Lake Macquarie Landcare

At Lake Macquarie Landcare, we are working to maintain engagement with our Landcare community in diverse ways. Please like us on Facebook and sign up to our fortnightly e-newsletter - this is the best way to keep up to date with our news and events and opportunities for engagement.

You can subscribe to our fortnightly e-news online at [www.lakemacquarielandcare.org.au](http://www.lakemacquarielandcare.org.au) or email us at [lro@lakemac.nsw.gov.au](mailto:lro@lakemac.nsw.gov.au)

If you have suggestions for how you would like to see us engage with you, or have ideas for sharing information about your group, we would love to hear them! Please email [lro@lakemac.nsw.gov.au](mailto:lro@lakemac.nsw.gov.au)

**Please keep engaging with Lake Macquarie Landcare through these channels:**

### Email newsletter



Subscribe to our fortnightly e-newsletter

Email [lro@lakemac.nsw.gov.au](mailto:lro@lakemac.nsw.gov.au)

### Website



[www.lakemacquarielandcare.org.au](http://www.lakemacquarielandcare.org.au)



### Facebook

[www.facebook.com/LakeMacLandcare](http://www.facebook.com/LakeMacLandcare)



### Youtube Videos

[www.youtube.com/LakeMacLandcare](http://www.youtube.com/LakeMacLandcare)

# New centre videos on YouTube

For those interested in learning more about the construction of the Landcare and Sustainable Living Centre and its features, you can watch a video on our Youtube channel at this link: <https://youtu.be/zVjgdst22rk> Learn about features such as energy efficiency, resource reuse, native plant green wall, and background to the funding and naming of the new centre.

## Background & naming

- NSW Government contributed \$202,118 to the \$2 million project through the Stronger Country Communities Fund, with Council funding the remainder
- Landcare & Sustainable Living Centre - broader focus
- Umali barai-ku means 'to do for the earth' in Awabakal language



Scan QR to watch video about background & naming

## Resource reuse

- Recycled pavers
- Rain collected from the roof stored in water tanks for facility reuse
- Stormwater filtered through wetland before running off site



Scan QR to watch video about resource reuse

## Energy efficiency features

- Insulation
- Louvres, fans, inverted truss ceiling
- Solar panels, EV charger



Scan QR to watch video about energy efficiency features

## Green Wall

- Helps to cool building
- Local native plants, suitable for propagation
- Easy to maintain
- Food and habitat for pollinators



Scan QR to watch video about the Green Wall



Visit our Youtube Channel  
[www.youtube.com/LakeMacLandcare](http://www.youtube.com/LakeMacLandcare) to watch videos on the opening of the new Centre and its features

# Landcare groups seeking members

The following groups would like to attract new volunteers. If you would like to advertise or update your group's details on this page and our website, please contact us on 4921 0392.

The groups have been organised under wards and suburbs to make them easier to locate, especially for those wishing to volunteer close to home (see map at right of wards in Lake Macquarie).



## East Ward Groups

Suburb	Group Name	Meeting Time	Contact Details
Blacksmiths	Blacksmiths Beach Dunecare	Every 2nd Wed of the month, Meet at 9am at 8 Carawa Street, Blacksmiths	LML 4921 0392
Blacksmiths	Pelican Area Sustainable Neighbourhood Group	Varies	Greg 49714808
Catherine Hill Bay	Catherine Hill Bay Landcare	First Mon of the month, 3-5pm at Carpark at Graveyard Beach	Carmel Brown 0438 499 636
Dudley	Fern Creek Landcare	1st Saturday of the month 8:30 – 12 noon	Gabi 0478 670 146, www.facebook.com/ FernCreekLandcareDudley
Eleebana	Stobbart Creek Landcare	Every three weeks, 8:30-10am	LML 4921 0392
Floraville	Floraville Ridge & Rainforest Reserve	Variable	Winsome 4945 4336
Jewells	Ballantrae to Halewood	Varies	LML 4921 0392
Pelican	Lakeview Parade Pelican	Monthly, usually on Wednesday mornings	Ted 0418328466, tedlougher@hotmail.com
Swansea	Lakeside Drive Landcare (cnr Wallarah St & Lakeside Dr)	Every 2nd Wed 8:30am-3pm and Fri 9am - 3pm	Garry 0400 033 006
Valentine	Allambee Gardens Reserve Landcare	Last Sun of month 2-4pm	LML 4921 0392
Valentine	Green Point Foreshore Reserve Landcare	Every Wed 8-11am	LML 4921 0392
Warners Bay/ Eleebana/ Lakelands	Warners Bay Landcare	Usually 1st Sun, 2nd Thurs and 3rd Fri of the month, 9am-12noon	LML 4921 0392

**\* Have your group details changed? Please contact Lake Macquarie Landcare on 4921 0392 to update \***



## West Ward Groups

Suburb	Group	Meeting Time	Contact Details
Bolton Point	Awaba Bay Landcare	1st Sun of each month, 9am-12noon, The Ridgeway between Bolton Cl & Fulton Cl	LML 4921 0392
Carey Bay/ Coal Point	Coal Point Progress Association Landcare	Every Thursday 8am-12:30pm	LML 4921 0392
Eraring	Payten Street Landcare	Variable	LML 4921 0392
Fennell Bay/ Bolton Point	Kooroora Bay Landcare	8.30-11.30am, first and third Wednesday of every month (please call to confirm)	Tony 040 889 1411
Macquarie Hills	Torrens Avenue Landcare	Varies	LML 4921 0392
Mirrabooka	Dandaraga Road - Fishery Point Landcare	1st Thursday or 3rd Saturday of each month.	Email Wilma on wilvk123@gmail.com or call LML 4921 0392
Morisset	Lakeside Retirement Village Landcare	Varies - several times a month	LML 4921 0392
Morisset	Yunung Landcare	1st Wednesday of the month and as needed	LML 4921 0392
Sunshine	Sunshine-Silverwater Landcare	1st Saturday & 3rd Thursday mornings of each month	LML 4921 0392 or email Marion melugg2@gmail.com
Toronto	Toronto Lions Park	2nd Friday of the month, 8-10am	LML 4921 0392
Toronto	Toronto Greenway Landcare	Every Sat from 8am.	LML 4921 0392
Wangi Wangi	Wangi Landcare (Oval site Cnr Donnelly Rd & Dobell Dr)	Last Tues of the month, 8-10am	Janet White 4975 5715
Wangi Wangi	Dobell Drive Reserve Landcare	2nd Sun of the month 8am –10am	LML 4921 0392
Wangi Wangi	Myuna Bay Landcare	2nd Fri of the month, 9am – 12noon.	LML 4921 0392 or email rmontgomery962@gmail.com
Wangi Wangi	Wangi Ridge Preservation Board Landcare	Sun, 8-10am, meet at water tank at Cres Rd	LML 4921 0392
Wyee Point	Wyee Point Reserve 2022	Varies	LML 4921 0392

## North Ward Groups

Suburb	Group Name	Meeting Time	Contact Details
Cardiff	Afton Close Landcare	2nd & 4th Sat of month 9-12, end of Close	LML 4921 0392
Charlestown	Flaggy Creek Landcare	2nd Sat of the month, 8am, meet at corner of Kaleen & Wakal Sts	Robert Gibson 4943 7486
Holmesville	West Wallsend District Landcare	Third Sunday of the month from 8am Eastern Summer Time, 9am for the rest of the year, Western end of Elizabeth St. Holmesville	Paul Lindsay – Secretary, WWDSNG 4953 2252
Kahibah	Kenibea Landcare (Cnr Kenibea Ave & Ocean View Pde)	Variable	LML 4921 0392
Kotara South	Tathra Landcare	Variable Sundays 8-10am. Meet at end of Neerim Ave	LML 4921 0392
Mount Hutton	Mount Hutton Landcare	Fridays, from 8:30am	LML 4921 0392
Rankin Park	Central Rankin Park Landcare	Wednesdays, Sundays	LML 4921 0392

**NATIONAL** 15-21 MAY 2023  
**VOLUNTEER**  
**THE CHANGE MAKERS WEEK**

## You're invited

Join us for a BBQ and celebration of Landcare volunteers, as well as talks on

- Healthy Moving for Landcaring with Ethos Health
- Biodiversity Concepts - what small mammals can teach us with Wendy Gleen

**Where:** Landcare and Sustainable Living Centre, umali barai-ku

**When:** Wednesday 17 May, 12:30 - 4pm

**RSVP:** By 12 May to 4921 0392 or  
[lro@lakemac.nsw.gov.au](mailto:lro@lakemac.nsw.gov.au)

National Volunteer Week 2023 Sponsors

**AON**



Supported by the Australian Government Department of Social Services

# On-site volunteer recognition

Can't make it to our National Volunteer Week celebration? Or would your group prefer to be recognised at one of your regular working bees? Let us know if you would like any Certificates of Recognition for National Volunteer Week sent out or presented to your group by a Landcare staff member - we'd be happy to arrange if Team Leaders can please contact us on [Iro@lakemac.nsw.gov.au](mailto:Iro@lakemac.nsw.gov.au) or 4921 0392 with names of regular volunteers.



## Wildlife wonders with Wendy

By Wendy Gleen, Landcare Support Officer

Why is Landcare so much fun? Because every session brings some kind of discovery. Recently I found a plant that is new to me: *Macrozamia flexuosa*, a rare type of cycad. It is a slow growing species that can live for hundreds of years and it belongs to a small group of plants that have survived relatively unchanged since the era of dinosaurs. It grows nowhere else on the planet, other than the Hunter Region and surrounding coast.

Finding this subtle little gem off a bush track in Valentine is an example of the love of discovery that is innate to humans as it brings a sense of wonder, purpose, and personal growth. Discovery expands our understanding of the world and motivates us to continue seeking out new experiences. What is your discovery this week?



## A native grass discovery

By Marion Lugg, LMLVN Chair and Landcare Team Leader

Here are a couple of pics of the native grass *Capillipedium spicigerum* (what a difficult name that is!). When you crush the seedhead, it has a faint smell of what I think is a bit like lemon pudding! I haven't thought to crush the leaves - they may have a stronger scent.

I first found it 2 years ago, during COVID, when I started walking along the street a lot more. It was on the verge above the reserve, amongst Coolatai grass etc. The seedhead is delicate-looking and a pretty colour, so it stood out. And finding a native grass where usually there are only exotics seemed quite special to me! I took photos to get an ID, but didn't see it again, as it's not where I usually walk. And I forgot all about it till just recently when I found quite a lot of it in the same place I'd found it 2 years ago, still happily growing amongst the Coolatai! I still think that's amazing!



# Have you seen this weed?

Chinese Violet *Asystasia gangetica subsp. micrantha*, has recently been detected at a number of new locations in Lake Macquarie.

Chinese violet is a fast-growing creeper with white flowers with two distinctive purple blotches on one of the five flower lobes. It can smother native plants, horticultural crops, gardens and lawns.

Infestations have been found in Eleebana, Toronto, Cardiff, Bolton Point and Marmong Point areas. If you believe you have found this invasive plant please phone Council's Biosecurity Officer on 4921 0333.



Note infestations that are already known to the Landcare office do not need reporting again.

## School plants available

Schools are again encouraged to apply for free plants through Council's Landcare in Schools program. Plants can be provided for projects including bush tucker gardens, wildlife corridors, frog-friendly habitats and other planting projects in school grounds. Apply online at [lakemacquarielandcare.org.au/about-landcare/landcare-in-schools/](http://lakemacquarielandcare.org.au/about-landcare/landcare-in-schools/)



## Nifty news from the nursery

By Landcare Nursery Apprentice Stephanie Taylor-Peters

For anyone who remembers my little story on our one and only *Actinotus helianthi* (flannel flower) successfully propagated from seed, she has graduated into a big-girl pot and will soon be ready to plant in our garden at the centre!

I'd like to say I've been watching her grow each day but to be honest, last month Alex asked me to make some flannel flower cuttings and I noticed one didn't look like a cutting (no dead stem where the cutting was originally cut off) and then I read the tag and it said seed grown!

It's a fast-paced business in the nursery and no plant has time to be coddled, but through natural selection this very special plant has persevered.



# Community sharps

Community sharps come in all shapes and sizes. Community sharps can refer to sharp pieces of metal, glass, plastic, plant material or medical waste such as needles and syringes. All of these items have the potential to cause injury or illness to Landcarers if handled.

If Landcarers discover any of this material onsite, it is advisable to leave the material where it is, don't attempt to touch or 'clean up', and then contact the Landcare office on 4921 0392 to report what the hazard is and where it is located. Some of the outdoor Landcare staff have been trained in community sharp collection and disposal, have the appropriate PPE, and can remove your sharps from site. The Landcare office can organise other clean up arrangements if needed.



## Call out for old Landcare signs to be removed



If you have seen or know of any old Landcare signs still on site please contact the office on 4921 0392 or [lro@lakemac.nsw.gov.au](mailto:lro@lakemac.nsw.gov.au). Our Landcare Support Officers will remove or replace the sign, if appropriate, so please take note of location and address.

You can identify old signs (pictured left) by the previous Lake Macquarie City Council logo and our old Landcare office number.

## Clean up breaks records

*Photo of South Street Landcare and article courtesy of EcoAdvocate.*

Thank you to the hundreds of volunteers who turned out for Clean Up Australia Day in March. This year 108 sites were registered across the City surpassing our previous record of 98!

Thirty-six school groups, 70 community and youth groups and 2 businesses lead the charge to remove more than 14 tonnes of rubbish from our natural environment, including:

- 14.4 tonnes of waste,
- 160kg of recyclables, and
- 229 tyres for recycling.

You can help keep Lake Macquarie clean all year round with support through the Eco Angel program.



**Thank you to all Landcare volunteers who participated!**

# Native of the moment: Forest Pennywort

By Wendy Davidson, Keith Barry Oval

*Hydrocotyle geraniifolia*, common name Forest Pennywort is a creeping and/or climbing herb, with stems up to several metres long, rooting at nodes near its base. It is found on moist forest floors, and likes well drained soils in semi-shade to full-shade positions.

On the August day of the Landcare bus trip, at its last stop at Keith Barry Oval, several Landcarers were taking photos of a scrambling groundcover, wondering what this interesting looking herb was. On a visit to KBO in December, Marion Lugg (LMLVN Chair) identified it as *Hydrocotyle geraniifolia*. It was growing on an area as per the published description, a south-facing slope in shade on the area that was not there one hundred years ago, with a sandy soil deposited when Stony Creek floods.

The *Hydrocotyle* has more than doubled in size since August, with stems over three metres in places. These delicate stems are advancing over rushes and small trees, and

climbing up the melaleuca that provided the conditions for the seed to germinate.

In early January it started to flower all over – such a delicate flower, smaller than a five cent piece. Given the right conditions, it could make an interesting groundcover in a bush garden.



# Critter of the moment: Plague Soldier Beetle

Photos courtesy of Winsome Lambkin

Seeing these beetles in large numbers may cause some concern for Landcarers, however, the Plague Soldier Beetle *Chauliognathus lugubris* will not harm plants or people. It is a native species found in temperate southeastern Australia and often swarm in large, localised groups around flora such as shrubs and trees, primarily to mate. Its grubs live in the soil, feeding on other small creatures. The adult beetles don't seem to eat the plants they settle on, although the sheer weight of a mass of them may break weaker twigs.



References and further information:

<https://blog.csiro.au/insect-of-the-week-the-plague-soldier-beetle-isnt-nearly-as-bad-as-it-sounds/>

# Landcare sightings!

Check out these pictures contributed by Lake Macquarie Landcare volunteers and staff in recent months. Please keep sending in your photos and snippets for our newsletters, website and Facebook page.



Left (top): Whiteroot / *Pratia Lobelia purpurascens*

Left (bottom): Yellow Rush-lily *Tricoryne elatior*

(Photos by John Sharples, Arbre Close Landcare)



Above: Moth (unknown species) (Photo by James Hamilton of Ballantrae to Halewood Landcare)



Above: Damselfly (Photo by John Fitter, Central Rankin Park Landcare)

# Plant sales from the Landcare nursery

Local tubestock for home gardens can be purchased from the Landcare nursery on Tuesdays and Wednesdays 8:30am - 3:30pm or by appointment.

Plants available for sales are also listed and described on our website [www.lakemacquarielandcare.org.au](http://www.lakemacquarielandcare.org.au) and can be paid for in advance via EFTPOS over the phone.

Please call us on 4921 0392 for plant sales enquiries. Discounts are available for Landcare volunteers and Backyard Habitat for Wildlife Members – the discounted tubestock rate for 2022-23 is \$4.10 per forestry tube.



## Would you like to contribute to our newsletters?

Perhaps you would like to promote a successful project, showcase what your group is up to or just share something interesting happening on your site. Please send your stories and photos to Kate Meares via email [lro@lakemac.nsw.gov.au](mailto:lro@lakemac.nsw.gov.au) or post to **PO Box 97 Toronto NSW 2283**. Call Kate with any questions on 4921 0392. Deadline for articles for the next newsletter (July August Urban Landcarer) is 12 May 2023.

Thank you to all the Landcarers who contributed stories, photos and information for this newsletter.

*Please circulate this publication within your group or share it with your neighbours.*

*This publication (and much more) is available online [www.lakemacquarielandcare.org.au](http://www.lakemacquarielandcare.org.au)*

## Sincere thanks to funders of current and recent grants:

- 2NURFM Radio
- Australian Government
- Delta Electricity
- Hunter Region Landcare Network
- Hunter Local Land Services
- Lake Macquarie City Council
- Greater Bank
- NSW Government
- Origin Energy

## LRC SUPPORT STAFF

**Landcare Coordinator :** Jason Harvey, **Finance & Admin. Officer:** Sue Edgar, **Landcare Network & Admin. Support Officer:** Debra Punton (M-W), **Landcare Program Delivery Officer:** Simon Lubinski **Landcare Support Officers:** Wendy Gleen (M-W), Amy Trello (W-F), **Landcare Publications & Grants Officer:** Kate Meares (T-F), **Landcare Communications Officer :** Stephanie Cassel (T-Th) **Site Maintenance and Nursery Officer:** Alex Wilson, **Apprentice Landcare Nursery Officer:** Stephanie Taylor-Peters

## LAKE MACQUARIE LANDCARE VOLUNTEER NETWORK COMMITTEE

**Chairperson:** Marion Lugg, **Deputy Chairperson:** Lois Simpson, **Secretary:** Wendy Davidson **Treasurer:** Bob Montgomery **Other members:** Ruth Hinds, Pam Montgomery, Winsome Lambkin, Don Roach, and Nancy Lott, **Public Officer:** Garry Stewart.

**Network Email:** [lmnl@lakemac.nsw.gov.au](mailto:lmnl@lakemac.nsw.gov.au)

*The opinions and views expressed within this newsletter are not necessarily those of Lake Macquarie Landcare Volunteer Network or Lake Macquarie City Council*



Lake Macquarie Landcare  
80 Toronto Road, Booragul NSW 2284  
Box 1906 HRMC NSW 2310

Phone: 4921 0392  
Email: [lro@lakemac.nsw.gov.au](mailto:lro@lakemac.nsw.gov.au)  
[www.lakemacquarielandcare.org.au](http://www.lakemacquarielandcare.org.au)

Office hours:  
Monday to Friday, 8am - 4pm



*Lake Macquarie Landcare is proudly supported by Lake Macquarie City Council*