

Inside this issue:

Super Saturday coming up 3



Wildlife monitoring at Biddabah Creek 4



Flying Fox project update 5



News from the nursery 6



Groups seeking members 8

Fridays in the Field 11

Native of the moment 14

Landcare sightings 15

Eco Exchange stall shares Landcare ethic



Lake Macquarie Landcare Volunteer Network committee hosted a stall on 22 February at the City's inaugural Eco Exchange, alongside other local groups, to share ideas on climate and sustainability. It was a great opportunity to tell more people about Landcare and the role our groups play in helping our climate. We also got some new sign ups for volunteering, events and our newsletters! Thank you to the volunteers that helped out with the stall.

The image at right shows one of the educational posters shared on the day at the Landcare stall.

Landcare helping climate

Planting Trees

Landcarers plant trees, shrubs, and grasses which helps reduce carbon dioxide in the atmosphere.

Soil health

Landcare activities help soil health to support diverse vegetation growth and carbon storage.

Protecting vegetation

Landcarers protect remnants of native vegetation and restore areas to provide habitat for native wildlife.

Reducing erosion

Landcaring in riparian zones protects waterways by reducing erosion and can lower the risk of flooding.

Improving resilience

Landcare helps to create healthy ecosystems and communities which are more resilient to climate change.



2025 Super Saturday Sessions

By Winsome Lambkin, Coordinator of SSS for Lake Macquarie Landcare Volunteer Network Committee

In 2025 we have planned four Super Saturday Sessions on a range of exciting natural topics. These morning sessions (held 9am-12noon) are a great opportunity to check what's new at the Landcare and Sustainable Living Centre, umali barai-ku, at Booragul and give you the opportunity to talk and socialise with other Landcarers and glean ideas for your site.

There'll be presenters who are experts in their particular field of work or study and many who will talk about their own sites:

- 15 March - Eric Huber - Chair of Earthcare Park Landcare - 'Turtle Island'
- 14 June - Amanda Hyde LLS Tocal - 'Hunter Estuary Wetlands'
- 12 July - 'Plant Identification'
- 25 October - 'Munibung Hill'

More details to follow. Mark your diaries now!

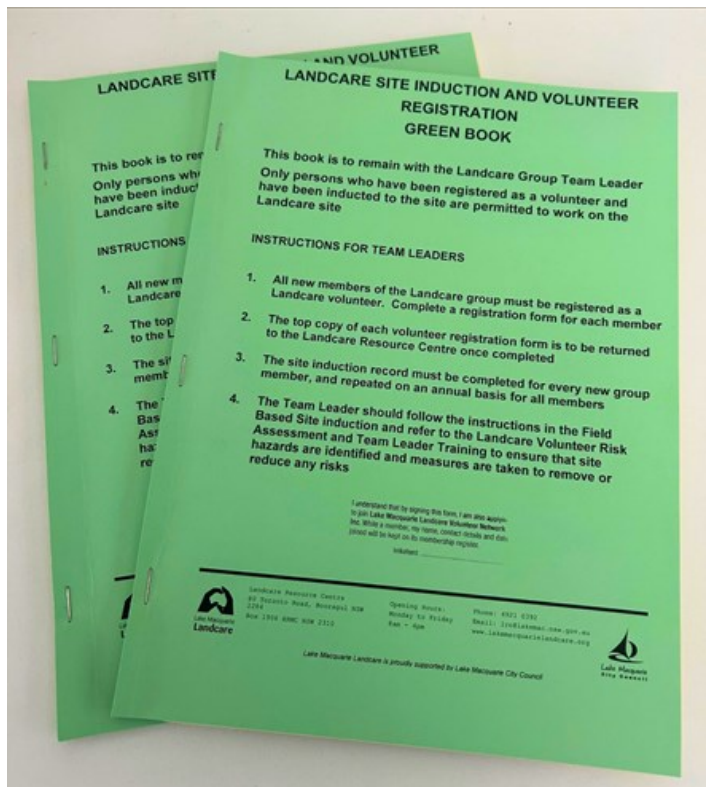


Landcare Site Induction and Volunteer Registration Forms (Green Books)

A reminder for all Landcare groups to please ensure that new volunteers complete the Landcare Site Induction and Volunteer Registration Green Book forms (also referred to as Green Sheets) when joining the group. In some cases, long-standing volunteers may need to update their details by filling out these forms again.

These are important Work, Health and Safety records and are vital in ensuring that volunteers continue to be covered by Council's and Landcare's Personal Accident insurance.

If you do not have a Green Book or need further assistance, please contact the Landcare office on 4921 0392 or lro@lakemac.nsw.gov.au



March Super Saturday Session



Learn about Earthcare Park's Turtle Island!

Join us to hear from Earthcare Park's Chair, Eric Huber, about their wonderfully successful turtle island project. This project helps to give Eastern Long-neck Turtles a refuge from predators at Tenambit wetlands and was carried out as part of the 1Million Turtles Conservation Program.

You'll also have the chance to socialise with other Landcare volunteers and catch up with what's happening at local sites and at the Landcare and Sustainable Living Centre, umali barai-ku.

When: Saturday 15 March 2025, 9am - 12noon.

Where: Landcare & Sustainable Living Centre, umali barai-ku 80 Toronto Road, Booragul.

Cost: Free - including morning tea.

Numbers are limited. Please RSVP by Wednesday, 12 March to the Landcare Office on 4921 0392 or LRO@lakemac.nsw.gov.au

Wildlife Monitoring at Biddabah Creek Landcare Site

By Wendy Gleen, Landcare Support Officer

Biddabah Creek Landcare Group is one of Lake Macquarie City Council's most committed and regular Landcare groups. They have done an excellent job regenerating their site which adjoins the Stormwater Quality Improvement Device (SQID) on Windross Drive, Warners Bay. This bush fragment and catchment, close to Munibung Hill, has seen remarkable recovery as the group removed Morning Glory *Ipomoea indica*, which had smothered much of the midstory and some of the canopy.

The group had been noticing bandicoot diggings at the site, so in December 2024 we set two movement-activated trail cameras (Anaconda Premium 4K/32MP Trail Camera Camo) over four weeks to get an idea of what fauna was present. No wildlife attractant was used.

Camera Placement

Camera 1: Near the creek, set to capture photos.

Camera 2: In a central clearing, set to capture videos.

Although the photo camera didn't capture much, the video camera gave us plenty of footage. Unfortunately, it means that the accompanying images are of lower quality because they were extracted from video. You can watch the short compilation video on the [Lake Macquarie Landcare Facebook page](#).

Fauna Detected

- White-browed Scrubwren
- Noisy Miner
- Buff-banded Rail (picture right, bottom)
- Skink
- Brushtailed Possum
- Northern Brown Bandicoot (picture right, top)
- Black Rat (Introduced)

All records were entered into iNaturalist and the Council's biodiversity database.

Lessons Learned for Site Management

Mosaic Weeding: The presence of bandicoots reminds us of the importance of mosaic weeding. By concentrating activities in specific areas, rather than having workers spread out across this small site, or

removing vegetation widely, bandicoots can find undisturbed refuges even if temporarily disturbed. This approach is usually best bush regeneration practise anyway.

Black Rats: The presence of feral Black Rats provide an opportunity for neighbourhood conversations about responsible interactions with wildlife. While feeding wetland birds is not recommended, those who do should use appropriate food in small quantities and ensure leftovers are cleaned up. Poor feeding practices not only negatively affect bird health but also often bolster feral rat populations, which can predate on the very bird nests people seek to protect.

A Holistic Approach

Landcare is not just about bush regeneration; it's about understanding every aspect of biodiversity at a site. This guides a nuanced approach to the management of the site and also strengthens community engagement—wildlife stories are one of our most powerful tools for connecting with people.

If you're interested in setting up wildlife cameras on Council-managed Landcare sites, you'll need prior permission. Landcare can lend you cameras or guide you on using your own, and we have protocols in place to ensure ethical and effective monitoring. Feel free to contact us for details: lro@lakemac.nsw.gov.au (02) 4921 0392.



Blackalls Park Flying Fox habitat restoration update

By Melina Beecroft, LMCC Natural Assets Officer

Lake Macquarie City Council is undertaking the third year of Flying Fox habitat restoration works at Blackalls Park with funding support through Local Government NSW. Grey-headed Flying Foxes are listed as a threatened species in NSW due to a rapid decline in numbers over a short period of time.

This project is being undertaken to restore and enhance the Flying Fox camp and foraging habitat within the core area of the camp to encourage Flying Foxes to utilise the centre of the camp and reduce impacts from Flying Foxes to adjacent properties.

Council's Natural Areas Project team conduct monthly monitoring reports recording the condition of Flying Foxes and their numbers. As of February 2025, there are about 2930 Grey-headed Flying Foxes on-site. This time last year, the site had the highest number of Flying Foxes recorded of approximately 30,000. Two thirds of the colony were Little Red Flying Foxes and the remainder Grey-headed Flying Foxes. This was the first time Little Red Flying Foxes had been recorded at Blackalls Park. By July 2024 all Flying Foxes had relocated. This gave the site time to recover and regenerate. Flying Foxes are nomadic and it is normal behaviour for them to move around to different colonies following food source. Small numbers of Flying Foxes started to return to Blackalls Park in November 2024.

The site is split into four management zones. Two of the management zones are revegetation areas. The first area was revegetated in 2019 with a total of 22,000 plants. The second area was revegetated in 2023 with an additional 25,000 plants. The plants have been chosen for suitable habitat and foraging for Flying Foxes. Both plantings have been extremely successful with 100% survival rate and very minimal weeds. Plantings are dense and include all strata layers. The 2019 plantings with a canopy of eight meters in height, was utilised by Flying Foxes during the large Flying Fox influx in 2024. The canopy of the area planted in 2023 is now a thriving three meters in height.

The other two zones are regeneration areas. These areas are both endangered Swamp Oak Floodplain Forests. When the project begun there was 90% weed cover in the midstory and ground layer. Primary weeds have now been reduced to 10% and Council's Natural Areas Project team are controlling secondary weeds. These areas are already showing successful recruitment of native plant species.

The project is tracking successfully, and we are really looking forward to seeing the progress over the next five years.

For more information about the Blackalls Park restoration project and updates on Flying Fox numbers visit lakemac.com.au/Projects/Blackalls-Park-flying-fox-camp



Above left: Revegetation in zone A



Above: the Natural Areas Project Team working in zone D

News from the Nursery

By Stephanie Taylor, Site Maintenance and Nursery Officer Landcare

The Coffee Bush *Breynia oblongifolia* we potted up last month has taken off! With so many things recently potted in the nursery, it's time for a bit of re-organising and for these *Breynia* to graduate on to a sunny spot where they can grow and harden off.

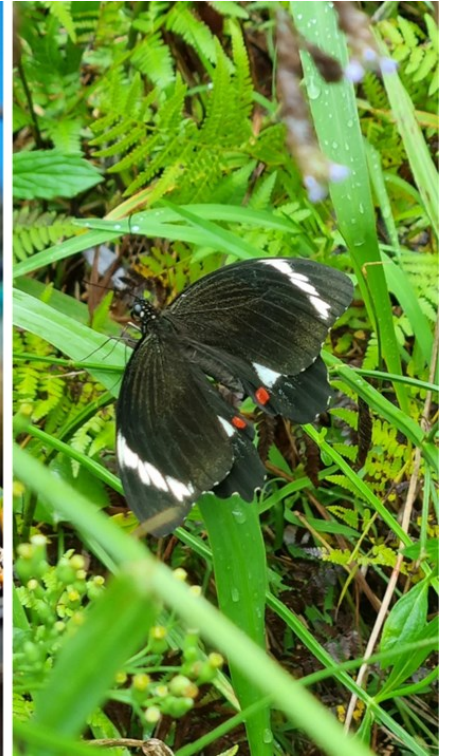
There's been lots to collect, with the Rough-fruit Pittosporum *Pittosporum revolutum* starting to fruit and the Bleeding Heart *Homalanthus populifolius* fruit finally ripening to a deep purple after hanging on green for months. And, lots of seed collecting means lots of seed cleaning. We've braved the fibreglass-like needles of the Native Hibiscus *Hibiscus heterophyllus* and are glad they're done with!

We've also been potting plants for September orders, including lots of Fringed Wattle *Acacia fimbriata* and (my favourite) Black Wattle *Callicoma serratifolia*.

I've been hoping for the rain predicted for the end of this week so we can make cuttings. Our stock of Rice Flower *Ozothamnus diosmifolius* has great cutting material now, and a wet, cloudy day will be perfect weather to propagate.

Outside of the nursery, our volunteers have been hard at work in the garden. The local Buff-banded Rail has been quite happy with this, scrounging for insects stirred up by our weeding. We have also seen lots of beautiful insects enjoying the season!

It's been a nice close to the summer period - fingers crossed for a nice cool autumn.



Pictured above is a pot of Coffee Bush *Breynia oblongifolia* that we potted in January and an Orchard Swallowtail at Green Point that we saw seed collecting.

Below is the *Breynia* one month later, in February, and a shot of our friend the Buff-banded Rail.



Funding available

Council's Community Environment Program

The Lake Mac Community Environment Grants Program, is designed to support community-initiated projects that improve our local environment and/or inspire environmentally sustainable behaviour in Lake Macquarie City.

Incorporated, not-for-profit community organisations are eligible to apply, including school Parent and Citizen groups, community-based pre-schools, service clubs, bush regeneration/conservation groups and Sustainable Neighbourhood Groups.

Grants of up to \$5000 per application are available for projects located in Lake Macquarie City. The number of grant applications funded per round is limited. These grants are offered twice a year. Applications for the current round opened 17 February and close 31 March 2025. Further information is available at www.lakemac.com.au/Our-Council/Grants-and-funding/Community-Environment-Grants



Westfield Local Heroes

Westfield Local Heroes is a recognition and awards program that shines the spotlight on individuals who make a positive impact to their local community or environment. Community members nominate their heroes and Westfield select three finalists for each Westfield destination to go through to the community vote. The successful hero for each of the 42 Westfield destinations is awarded a \$20,000 grant for the organisation or group they represent, and each finalist receives a \$5,000 grant for their organisation or group. Applications close 13 March 2025. Further information available at www.westfield.com.au/local-heroes

If your Landcare group would like any assistance applying for grants for Landcare works please contact Kate Meares at the Landcare office on 02 4921 0392. All grants applied for under the Lake Macquarie Landcare Volunteer Network require approval from the LMLVN Committee and the Landholder.

Nature Journaling workshop

There are many ways to record observations in your garden or nearby bushland. This workshop will provide you with the skills and confidence. Join natural history illustrator Henrietta Mooney as she guides you to build your skills and confidence to explore our great outdoors, connect with nature and document your observations through nature journaling.

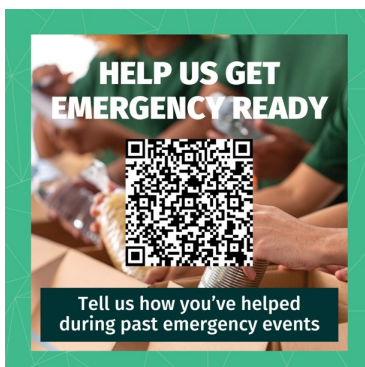
When: Friday 4 April 2025 9:30 AM - 12:30 PM

Where: Landcare & Sustainable Living Centre, umali barai-ku

80 Toronto Road Booragul, NSW 2285

Bookings essential - please register through [Council's Eventbrite page](#).

Help get Lake Mac Emergency Ready



Lake Macquarie City Council is planning how to manage spontaneous volunteers - people who seek to help during or after an emergency event.

Help identify local strengths, needs and gaps and share your experiences of past emergencies and spontaneous volunteering.

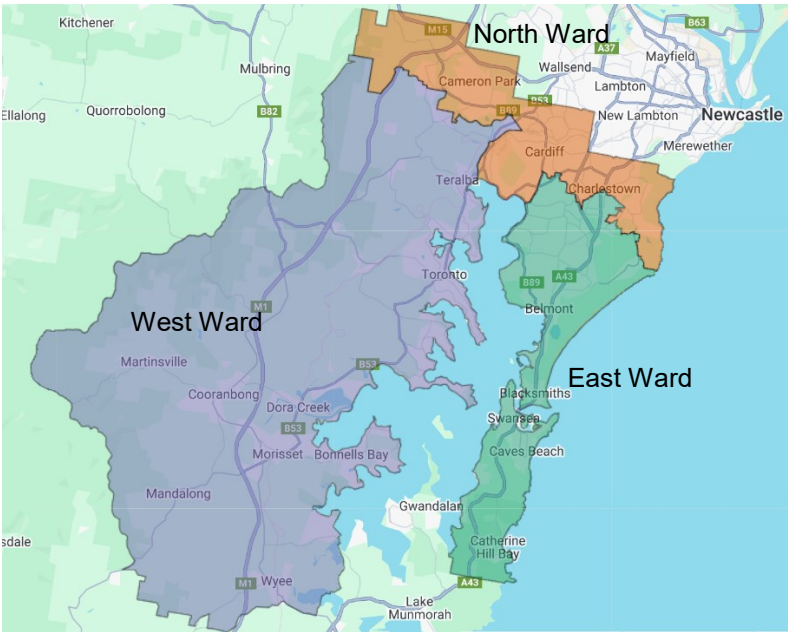
Take the survey by 24 March:

surveymonkey.com/r/SpontaneousVolunteer

Landcare groups seeking members

The following groups would like to attract new volunteers. If you would like to advertise or update your group’s details on this page and our website, please contact us on 4921 0392.

The groups have been organised under wards and suburbs to make them easier to locate, especially for those wishing to volunteer close to home (see map at right of wards in Lake Macquarie).



West Ward Groups

Suburb	Group	Meeting Time	Contact Details
Bolton Point	Awaba Bay Landcare	1st Sun of each month, 9am-12noon, The Ridgeway between Bolton Cl & Fulton Cl	LML 4921 0392
Carey Bay/ Coal Point	Coal Point Progress Association Landcare	Every Thursday 8am-12:30pm	LML 4921 0392
Dora Creek	Dora Creek Landcare	Minnie Street or Boat Ramp - every Tuesday 9am – noon at one or the other	LML 4921 0392
Eraring	Eraring Landcare	Variable	LML 4921 0392
Fennell Bay/ Bolton Point	Kooroora Bay Landcare	8.30-11.30am, every 2nd Wednesday of the month (please call to confirm)	LML 4921 0392
Holmesville	West Wallsend District Landcare	Varies	Robynne 4953 3401 or 0429322051
Mirrabooka	Dandaraga Road - Fishery Point Landcare	1st Thursday or 3rd Saturday of each month.	Email Wilma on wilvk123@gmail.com or call LML 4921 0392
Morisset	Lakeside Retirement Village Landcare	Varies - several times a month	LML 4921 0392
Morisset Park	Lake Petite	Varies	LML 4921 0392
Sunshine	Sunshine-Silverwater Landcare	1st Saturday & 3rd Thursday mornings of each month	LML 4921 0392 or email Marion melugg2@gmail.com
Toronto	Toronto Lions Park	2nd Friday of the month, 8-10am	LML 4921 0392
Toronto	Toronto Greenway Landcare	Every Sat from 8am.	LML 4921 0392
Wangi Wangi	Dobell Drive Reserve Landcare	2nd Sun of the month 8am –10am	LML 4921 0392
Wangi Wangi	Myuna Bay Landcare	2nd Fri of the month, 9am – 12noon.	LML 4921 0392 or email rmontgomery962@gmail.com
Wangi Wangi	Wangi Ridge Preservation Board Landcare	Sun, 8-10am, meet at water tank at Cres Rd	LML 4921 0392
Wyee Point	Wyee Point Reserve Landcare	Varies - see Wyee Point Reserve Landcare Facebook page	LML 4921 0392

North Ward Groups

Suburb	Group Name	Meeting Time	Contact Details
Cardiff	Afton Close Landcare	2nd & 4th Sat of month 9-12, end of Close	LML 4921 0392
Charlestown	Flaggy Creek Landcare	2nd Sat of the month, 8am, meet at corner of Kaleen & Wakal Sts	Robert Gibson 4943 7486
Highfields	Highfields Landcare	Variable	LML 4921 0392
Kahibah	Kenibea Landcare	Variable	LML 4921 0392
Kotara South	Tathra Landcare	Variable Sundays 8-10am. Meet at end of Neerim Ave	LML 4921 0392
Lakelands	Biddabah Creek Landcare	Every Monday 8:30am	Vina 0437 492 387
Macquarie Hills	Torrens Avenue Landcare	Varies	LML 4921 0392
Rankin Park	Central Rankin Park Landcare	Wednesdays, Sundays	LML 4921 0392
Whitebridge	Fernleigh Track Whitebridge	1st Sat and 3rd Fri of month, 8 -11am. Fernleigh track rest area, entry from Paterson Close, Whitebridge.	LML 4921 0392
Whitebridge	Whitebridge Balireh	Varies	LML 4921 0392

East Ward Groups

Suburb	Group Name	Meeting Time	Contact Details
Belmont	John Fisher Road	Varies	LML 4921 0392
Blacksmiths	Blacksmiths Marks Point Pelican Sustainable Landcare group	Varies, usually meet Tues 8:30am Grannies Pool Carpark	Greg 49714808
Catherine Hill Bay	Catherine Hill Bay Landcare	First Mon of the month, 3-5pm at Carpark at Graveyard Beach	Carmel Brown 0438 499 636
Eleebana	Stobbart Creek Landcare	Every three weeks, 8:30-10am	LML 4921 0392
Floraville	Floraville Ridge & Rainforest Reserve	Variable	Winsome 0431 968 315
Jewells	Ballantrae to Halewood	Varies	LML 4921 0392
Valentine	Allambee Gardens Reserve Landcare	Last Sun of month 2-4pm	LML 4921 0392
Valentine	Green Point Foreshore Reserve Landcare	Every Wed 8-11am	LML 4921 0392
Warners Bay/ Eleebana/ Lakelands	Warners Bay Landcare	Usually 1st Sun, 2nd Thurs and 3rd Fri of the month, 9am-12noon	LML 4921 0392

*** Have your group details changed? Please contact Lake Macquarie Landcare on 4921 0392 to update ***

Cold Tea Creek Landcare planting - 11 March

By Winsome Lambkin, Cold Tea Creek Landcare Team Leader

You are invited to assist with planting adjacent to Cold Tea Creek, off Capri Close, Belmont, on **Tuesday March 11th, 9am-12pm**.

Park on the grass immediately after turning off the Pacific Highway. Walk along the gravel track once you pass the metal gate. You will be working alongside the Green Team. You must wear long pants, a long sleeved shirt, gloves and hat. You'll need water and insect repellent.

Your reward will include a delightful shady setting under mature trees, with views along the canal and across Belmont Lagoon as well as seeing the nearby magnificent bridge which is part of the Fernleigh Awabakal Shared Track (FAST).

You are welcome to contact me for more details:

Winsome Lambkin, 0431 968 315.



Green Team are back for a busy season

The Green Team returned in late January to help Landcare groups around Lake Macquarie with lots of weeding and site maintenance.

Team Leaders are encouraged to request support days in the coming months. Each Landcare group can be supported with two Green Team visits per financial year. However, active groups who submit their work diaries can apply for further assistance. If there is room in the calendar once the first round of entitlements are filled, we will consider providing additional support.

Please contact Landcare staff on Iro@lakemac.nsw.gov.au or 4921 0392 to book your friendly Green Team visit.

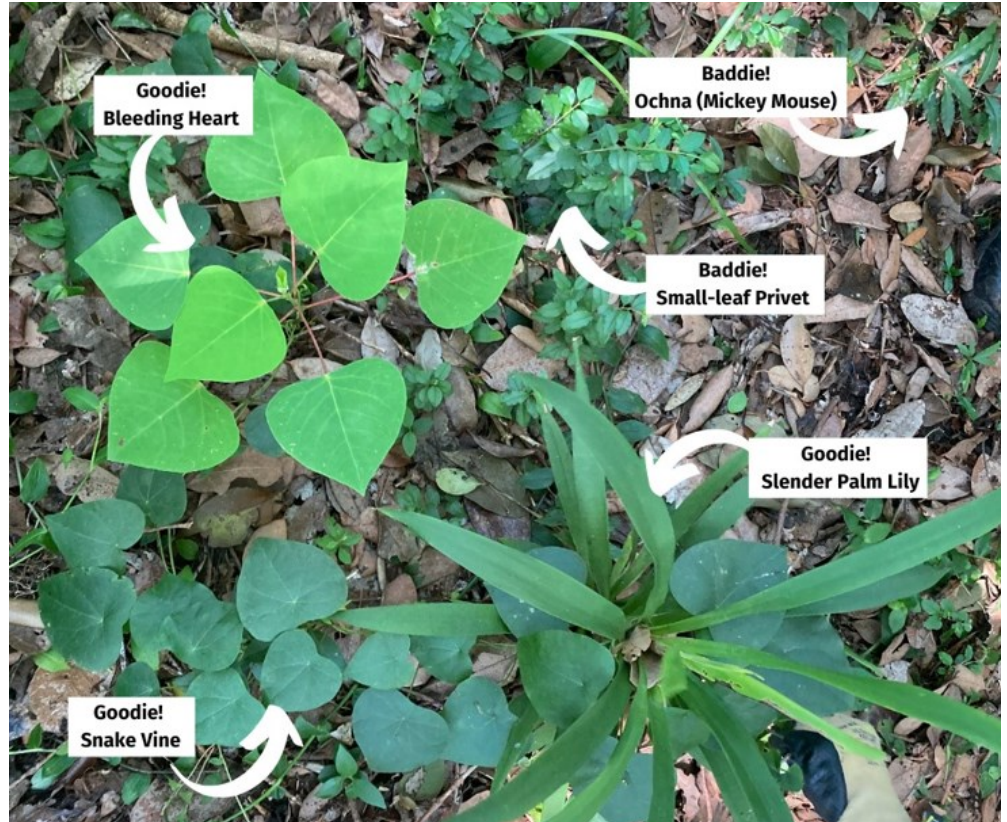


Fridays in the Field/ Friday Focus on Facebook

Follow us on Facebook to see our regular segments 'Fridays in the Field' and 'Friday Focus' with Landcare staff. Here are some snippets from recent weeks.

7 February with Amy and the Green Team

The Green Team spent Wednesday morning at Kenibea Bushland weeding under the canopy and around emerging natives. This was a good opportunity for plant ID with the 'Goodies' (natives) and the 'Baddies' (weeds) and to help understand where we focus our weeding efforts. Weeds and natives compete for moisture and nutrients in the soil and for sunlight. Simply weeding around the emerging natives is enough to encourage them to reach for the sunlight. We weed around the natives leaving the weed waste onsite in this scenario. Most Landcarers would agree this type of work is almost always rewarding.



28 February with Wendy and the Green Team

Team leader Wendy of Keith Barry Oval Landcare recently shared her sighting of this tiny *Boronia polygalifolia* (Milkwort Boronia) with us during a particularly happy morning Landcaring. On entering the record however, we found a botanical identity crisis! A genetic study (Duretto et al 2020) found that the genus *Boronia* is polyphyletic - meaning it's a group of plants that are classified together but do not share a common ancestor. In other words, they have been grouped based on similarities that evolved independently, rather than because they all descend from a single evolutionary lineage. Duretto et al renamed this little plant *Cyanothamnus polygalifolius* but it looks like the update hasn't been fully adopted across the board yet, with some sources updating to the new name, others not, and some using both! Splitting *Boronia* into separate genera, like *Cyanothamnus*, means we now recognize more biodiversity than we originally thought. It's a reminder that the wild places we work so hard to protect hold more biodiversity than we realise. Keith Barry Oval Landcare, you never disappoint!



References:

Duretto, Marco F., Margaret M. Heslewood, and Michael J. Bayly. "Boronia (Rutaceae) is polyphyletic: reinstating Cyanothamnus and the problems associated with inappropriately defined outgroups." *Taxon* 69.3 (2020): 481-499.

Roslyn Cornish for detail and background.

The benefits of weeds

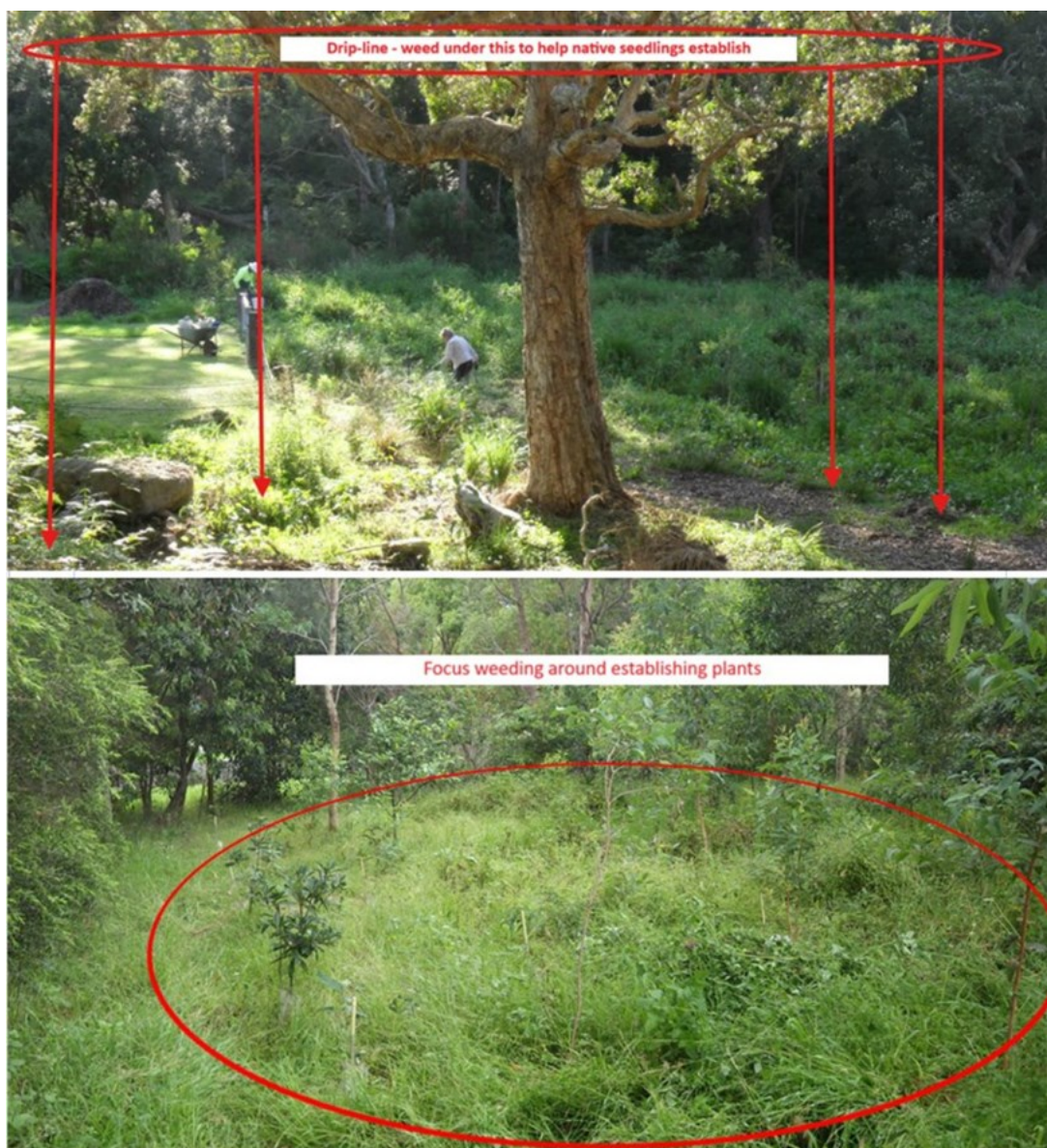
By Amy Trello, Landcare Support Officer

As you head back to your Landcare sites, you'll probably see a lot of weeds. Take that frown and turn it upside down because there are some benefits to those weeds.

Weeds aren't all bad. They are just a plant out of place. They provide habitat, food, shade and shelter for native wildlife, insects and bugs. Weeds help hold the soil together, help prevent erosion, create their own little micro-climate around natives, give our little native animals a place to hide. Over-clearing of weeds on your Landcare site can take away all these benefits that we can't always see.

Here are a few strategies to help remind us why weeds aren't all that bad. Look to the canopy or the shrub layer. Find a native canopy tree and weed underneath it to where the branches stop, referred to as the drip line. This can be a way to help focus your efforts and keep weeding on your site manageable. Managing weeds around establishing planting by tossing the weed waste back around the plants can help to protect the root zone, increase available moisture to the plants roots and help insulate the ground from extreme heat. Finding the edge of your best bit of natives and going from there is always a good place to start. Landcarers can also access our fact sheets on Targeting Weeds and Managing Weed Waste as well as other resources on our website here.

In the meantime, if you are having trouble getting started with weeding on your Landcare site or other problem-solving solutions reach out to office and book in a site visit with one of our Landcare Support Officers Amy, Wendy or Simon.



Vale John Gilbey

By Winsome Lambkin, LMLVN Committee

In the late 1960's John Gilbey was employed to help revegetate the coastal area we now know as Belmont Wetlands State Park. This planting followed the cessation of mining, mainly for rutile, along most of Nine Mile Beach, from Blacksmiths to Redhead. The three species chosen were Bitou Bush (an African species), *Acacia saligna* (a WA wattle) and Coastal Tea Tree. We know the results of that procedure! John often told us that now he and his wife Caroline were removing what he had been paid to plant!

John's house backed onto the Park and both he and Caroline worked most days clearing and building tracks. He had a wealth of knowledge and a collection of photos about the mining operations. People would always gather around John to hear his tales.

Caroline died not so long ago. They were close partners. A seat with a plaque honouring them both is set along a track to the wetlands to the north of the Park office. It's in an area which was not mined and which contains long-lived gnarly banksias and gums growing on undisturbed sandhills.



Photo: John and Caroline Gilbey receiving Local Legend Awards at the 2011 Environmental Excellence in Landcare Awards.

Landcare shirts and hats

The Lake Macquarie Landcare Volunteer Network has Landcare shirts and hats available to purchase. Shirts are \$35, available in sizes: S, M, L, XL, and XXL. Hats are priced at \$22, in sizes 57cm, 59cm, and 61cm.

If you would like to purchase, you can drop into the Landcare office, or contact us on 4921 0392 or email lro@lakemac.nsw.gov.au to coordinate a suitable pick-up time. Cash payments only for shirts and hat purchases.

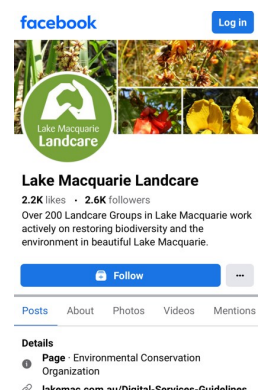


Follow Lake Macquarie Landcare on Facebook

Join over 2500 people who follow Lake Macquarie Landcare on Facebook!

See all the latest news, Landcare sightings, videos and lots more. Send us messages and show your fellow Landcarers your support through comments. A great way to stay connected!

Visit www.facebook.com/LakeMacLandcare



Native of the Moment: Spade Flower

By Winsome Lambkin, LMLVN Committee

Hybanthus stellarioides, known as Spade Flower, is an annual native herb and is part of the Violaceae group. In my photo, you might notice its seed pod which usually contains 9 seeds. The plant's description says it grows to 30 cm, with a very thin stem and alternate leaves. Flowers of this group are yellow or orange and consist of one large lobe with a prominent bump though you'd need a magnifying glass to see other details. I thought that it was just one big petal- if you call 1cm 'big'! It can be found flowering throughout the year, though mostly in spring and summer, in eucalypt forests and wallum woodlands. It's a host plant for common glasswing butterflies.

For more information visit plantnet.rbgsyd.nsw.gov.au/



Above: Spade Flower (Photo by Winsome Lambkin)

Critter of the Moment: Powerful Owl

By Winsome Lambkin, Floraville Rainforest Reserve Team Leader

For over 20 years, the Powerful Owl, *Ninox strenua*, listed as vulnerable, has been seen or heard in Floraville Rainforest Gully. It is the largest of the nocturnal birds and can grow up to 70cm. Its head is relatively small compared to its body size. It has distinctive dark markings on its chest which resemble down-pointing arrows. There are feathers on its legs, which have enormous, powerful yellow/orange talons. Its monotonously repeated call at dusk is a double hoot, with both hoots being on the same note. The owls live along the Australian east coast and need old growth eucalypt forests with large hollows for their nests. They need an extensive area in which to forage, usually greater than 1000 hectares. They eat birds and a variety of mammals with their favourite being ring-tailed possums. The complete prey is swallowed including feathers, or fur, plus bones. They regurgitate these later in pellet form. By investigating these pellets, it can be mapped where they live and what they've been eating. Large splashes on white poo referred to as 'whitewash', will alert you to their day roost. Their eyes are set forward allowing depth of perception plus they have good hearing. Like other owls, their specialised feathers allow them to fly silently which assists them to catch their prey. Powerful Owls mate for life- up to 30 years! They nest in the hollow of a tree each May/June. They also have a roosting branch nearby.

The Green Team, with Amy, plus Floraville Ridge and Rainforest Landcare members were amazed to see a Powerful Owl roosting above their heads, and, as on previous occasions, almost oblivious to us being there for over 3 hours! Lesson:- always look up!



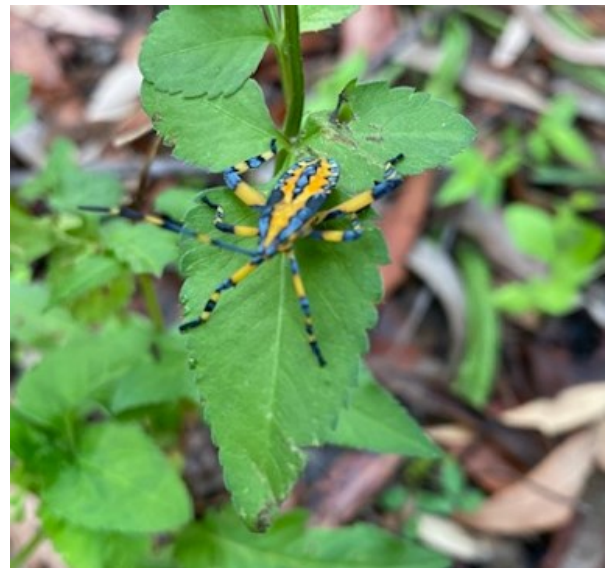
Above: Powerful Owl at Floraville Rainforest Gully, sighting Feb 19th 2025 by Amy, the Green Team plus Robert A and Winsome L. (Photo by Amy Trello)

Landcare sightings!

Check out these pictures contributed by Lake Macquarie Landcare volunteers and staff in recent months. Please keep sending in your photos and snippets for our newsletters, website and Facebook page.



Above: Laughing Kookaburra with young being fed (photo by John Sharples, Arbore Close Landcare).



Top: Lantana Beetle *Octotoma scabripennis* seen on a couple of small Lantana shrubs—these are a biocontrol agent for Lantana.

Above: Eucalyptus Tip-wilter bug *Amorbus atomarius*

Above: Slender Hyacinth Orchid *Dipodium variegatum* that was flowering at the Whitebridge Balireh Landcare site at the start of summer (photo by Rosalyn O'Shannassy).

(Photos by Roslyn Cornish, Coal Point Progress Association Landcare group, taken at West Ridge, Coal Point).

Plant sales from the Landcare nursery

Local tubestock for home gardens can be purchased from the Landcare nursery on Tuesdays and Wednesdays 8:30am - 3:30pm or by appointment.

Plants available for sales are also listed and described on our website www.lakemacquarielandcare.org.au

Please call us on 4921 0392 for plant sales enquiries. Discounts are available for Landcare volunteers and Backyard Habitat for Wildlife Members – the discounted tubestock rate is currently \$4.65 per forestry tube. EFTPOS purchases only.



Would you like to contribute to our newsletters?

Perhaps you would like to promote a successful project, showcase what your group is up to or just share something interesting happening on your site. Please send your stories and photos to Kate Meares via email lro@lakemac.nsw.gov.au or post to **PO Box 97 Toronto NSW 2283**. Call Kate with any questions on 4921 0392. Deadline for articles for the next newsletter (May/June Urban Landcarer) is 12 April 2025.

Thank you to all the Landcarers who contributed stories, photos and information for this newsletter.

Please circulate this publication within your group or share it with your neighbours.

This publication (and much more) is available online www.lakemacquarielandcare.org.au

Sincere thanks to funders of current and recent grants:

- 2NURFM Radio
- Australian Government
- Delta Electricity
- Greater Bank
- Hunter Region Landcare Network
- Hunter Local Land Services
- Lake Macquarie City Council
- NSW Government
- Origin Energy

LANDCARE SUPPORT STAFF

Landcare Coordinator: Simon Lubinski (acting), **Landcare Business Support Officer:** Emily Hemsall, **Landcare Network & Admin. Support Officer:** Debra Punton (M-T), **Landcare Support Officers:** Wendy Gleen (M-F), Amy Trello (M-F), **Landcare Publications & Grants Officer:** Kate Meares (T-F), **Landcare Communications Officer :** Stephanie Cassel (M-F) **Site Maintenance and Nursery Officer:** Stephanie Taylor, **Apprentice Landcare Nursery Officer:** Coco Della Libera

LAKE MACQUARIE LANDCARE VOLUNTEER NETWORK COMMITTEE

Chairperson: Marion Lugg, **Deputy Chairperson:** Lois Simpson, **Secretary:** Wendy Davidson **Treasurer:** Julia Stenton **Other members:** Pam Montgomery, Winsome Lambkin, Don Roach, Rosalynd O'Shannassy and Nancy Lott **Public Officer:** Julia Stenton

Network Email: lmIn@lakemac.nsw.gov.au (admin matters); lmIn.inc@icloud.com (for direct communication with the Committee)

The opinions and views expressed within this newsletter are not necessarily those of Lake Macquarie Landcare Volunteer Network or Lake Macquarie City Council



Lake Macquarie Landcare
80 Toronto Road, Booragul NSW 2284
Box 1906 HRMC NSW 2310

Phone: 4921 0392
Email: lro@lakemac.nsw.gov.au
www.lakemacquarielandcare.org.au

Office hours:
Monday to Friday, 8am - 4pm



Lake Macquarie Landcare is proudly supported by Lake Macquarie City Council